



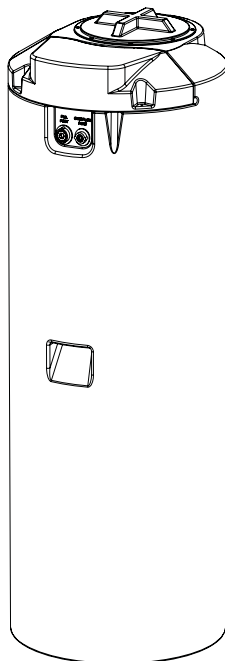
THE WATER WORKS FRESH WATER AUXILIARY TANK

SPECIFICATIONS

Height	60 in	152 cm
Diameter	23 in	58 cm
Tank Capacity	100 gal	378 ltr
Weight Empty	32 lb	14.52 kg
Weight Full	866.5 lb	392.97 kg

CAUTION

DISCONNECT FWD1-1000 FROM POWER SOURCE PRIOR TO
PERFORMING ANY MAINTENANCE OR SERVICE WORK



POLYJOHN USA

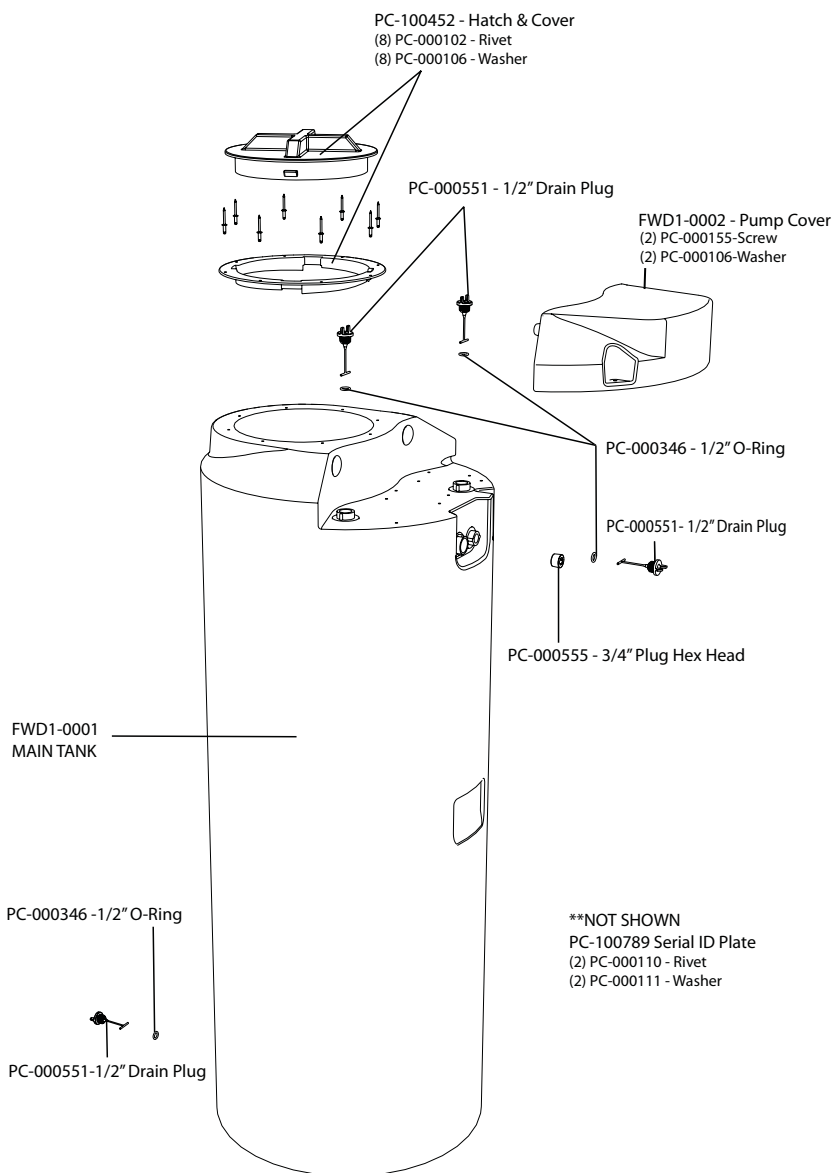
PolyJohn Enterprises Corp
2500 Gaspar Ave.
Whiting, IN 46394
Phone: 800-292-1305
Fax: 219-659-0625
www.polyjohn.com
info@polyjohn.com

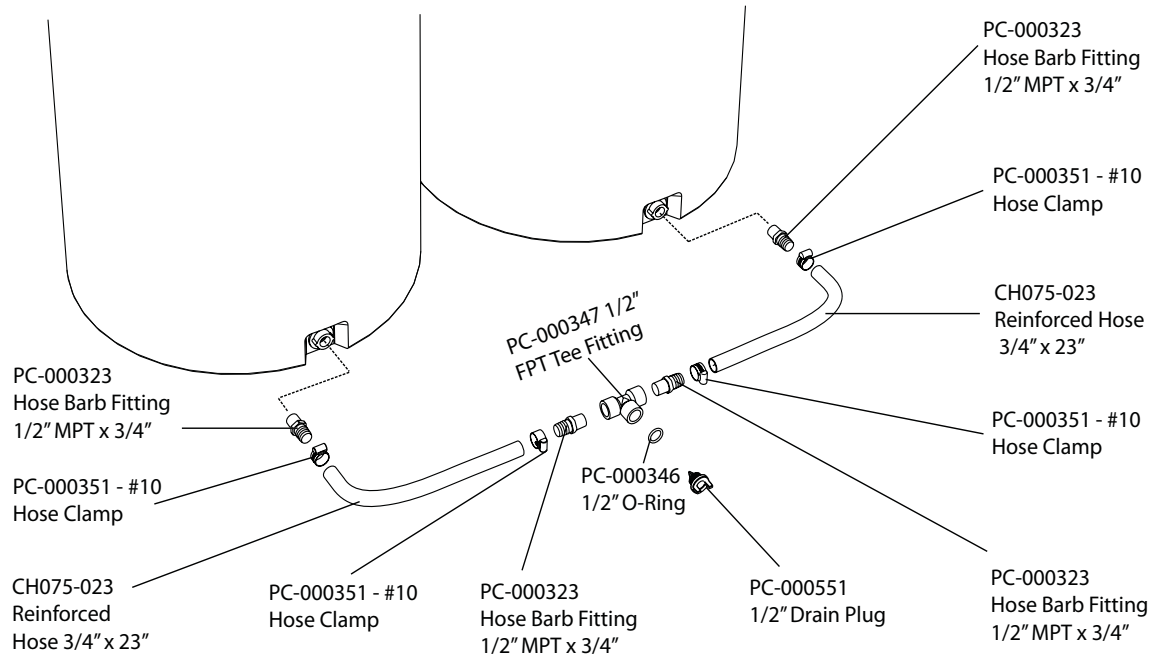
POLYJOHN WORLDWIDE

PolyJohn (UK) Ltd.
Equinox 1 Audby Lane
Wetherby, England LS22 7RD
Phone: 44 (0) 1937-583333
Fax: 44 (0) 1937-583322
sales@polyjohn.co.uk

POLYJOHN CANADA

Rama Plastics
P.O. Box 2300
199 Forest Plain Rd.
Orillia, Ontario LV3 6S2
Phone: 800-465-9590
Fax: 705-325-8250
info@ramaplastics.ca





Parts Included

- 4 - PC-000351 Hose Clamps #10
- 2 - CH075-023 Reinforced Hose 3/4" x 23"
- 4 - PC-000323 Hose Barb Fitting 1/2" MPT x 3/4"
- 1 - PC-000347 FPT Tee Fitting 1/2"

General Product Overview

This 100 gallon holding tank works in conjunction with the FWD1-1000 to allow a capacity of 200 gallons of fresh water. When hooked up to an existing FWD1-1000 it acts as one tank. All the necessary plumbing is included.

Set-up Operation Information

- Step 1.** Make sure the fresh water is drained from the FWD1-1000. If existing plumbing is attached to the bottom of FWD1-1000 disconnect or remove drain plug. Remove the drain plug from the bottom of the FWD1-0500 tank.
- Step 2.** Thread one of the 1/2" MPT Hose Barb Fittings onto the bottom of the existing FWD1-1000 tank. (Teflon plumbing tape is recommended to thread the fittings.) Slip one of the hose clamps over one end of the 3/4" Reinforced Hose and attach to the 1/2" MPT Hose Barb Fitting that is connected to the bottom of the FWD1-1000 and tighten hose clamp. Follow this procedure for the FWD1-0500.
- Step 3.** Slip the other hose clamps over both hoses that are already connected to each of the tanks. Insert the 1/2" FPT Tee Fitting into each of the hoses and tighten hose clamps at each end of the tee.
- Step 4.** At this point if any drain plumbing existed, it can now be attached to the 1/2" FPT Tee Fitting. If no plumbing existed, then the tether needs to be cut off of the 1/2" Drain Plug and inserted along with the 1/2" O-Ring into the open end of the 1/2" FPT Tee Fitting. Please refer to the Operations Manual for filling and service procedures.

MISSION STATEMENT

"PolyJohn is a family owned, state of the art, plastics manufacturing company dedicated to providing its employees with a work environment committed to excellence, and its customers with innovative products, services and technology that meet or exceed their requirements."

THANK YOU FOR PURCHASING POLYJOHN PRODUCTS!

Look for us on the Web @ www.PolyJohn.com