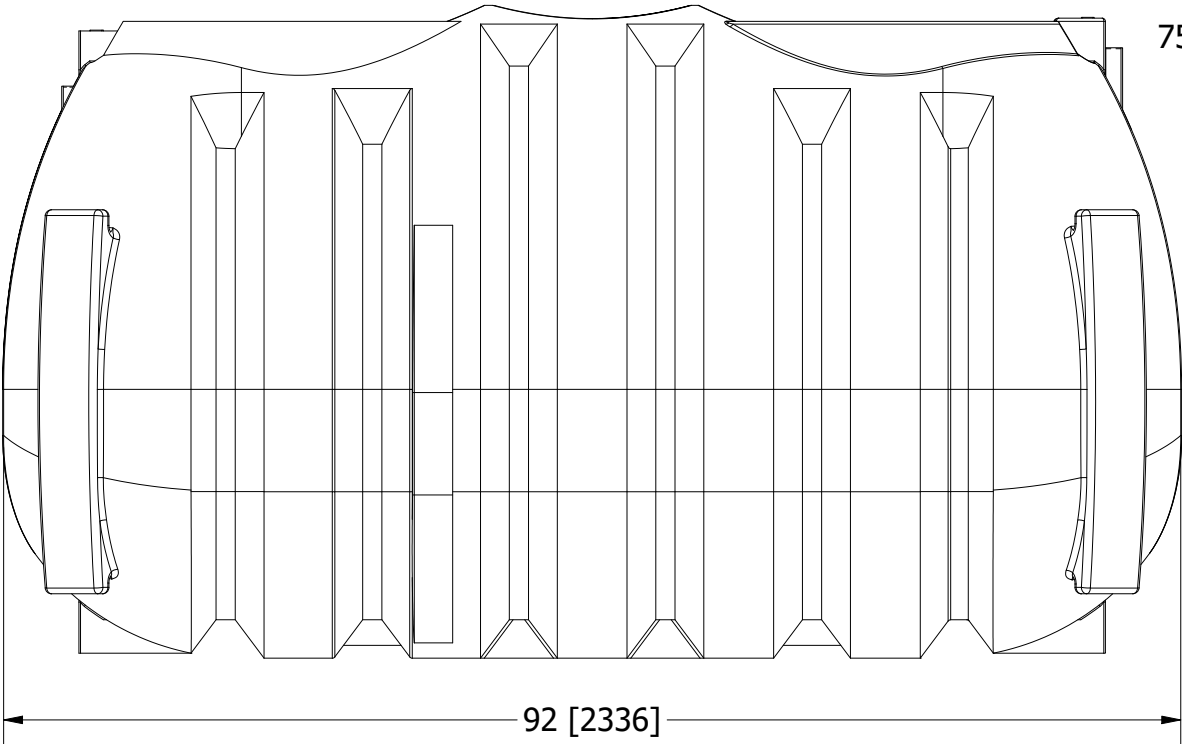


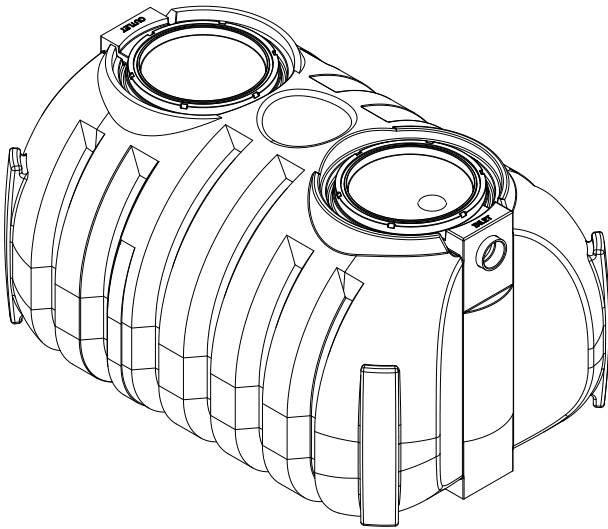
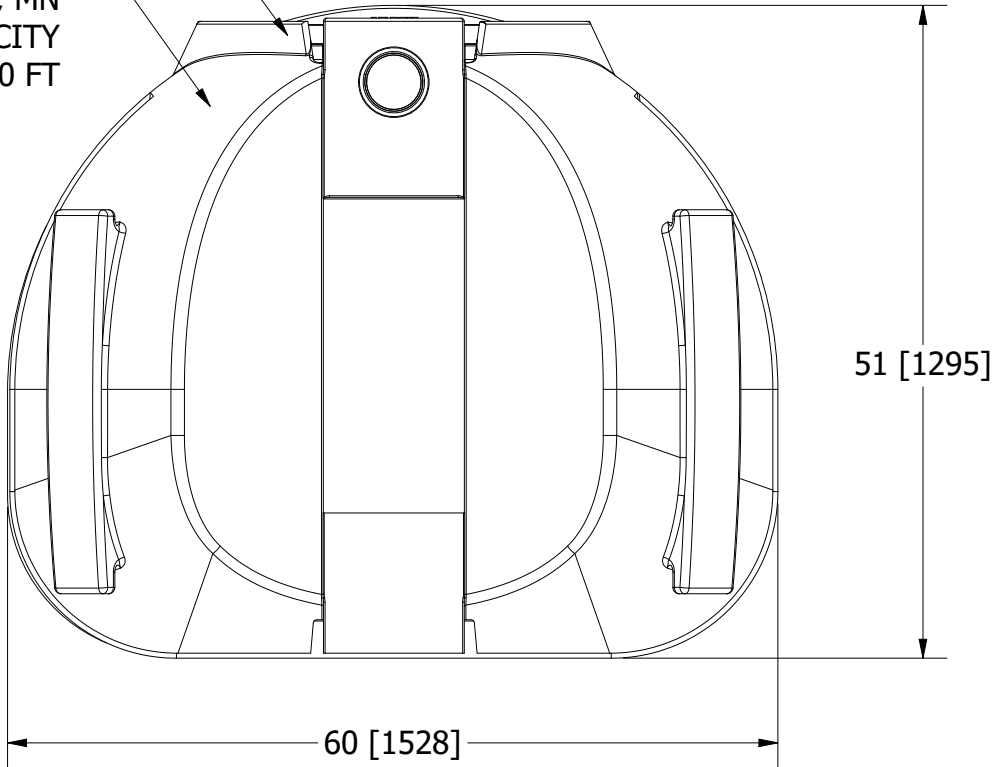
MATERIAL: HIGH-DENSITY POLYETHYLENE
NSF 61 LISTED
825 US GALLONS WORKING CAPACITY

REVISION HISTORY				
ZONE	REV	DESCRIPTION	DATE	APPROVED




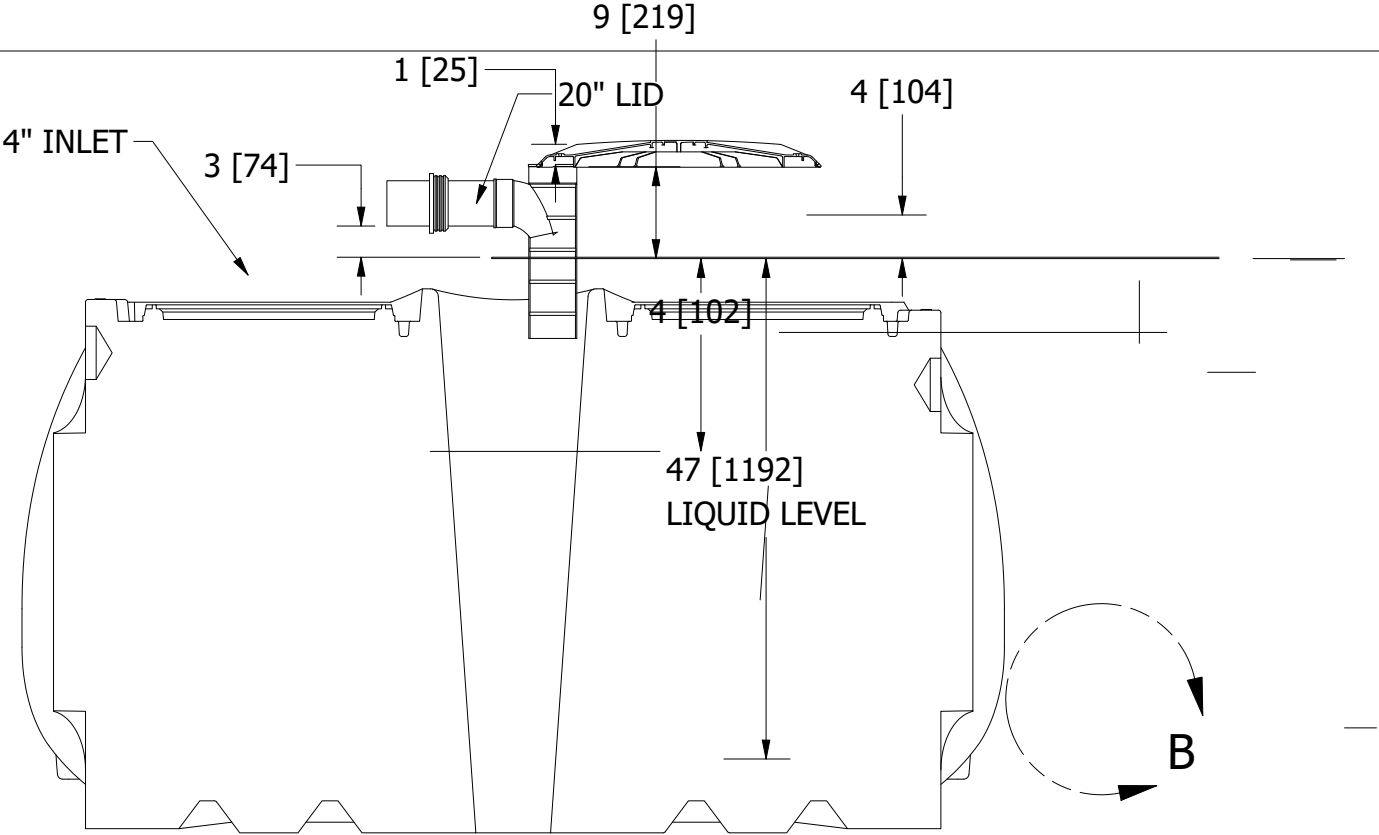
SERIAL NUMBER EMBOSSED HERE
CAN BE REFERENCED TO THE
DATE OF MANUFACTURE

NORWESCO, INC.
ST. BONIFACIUS, MN
750 US GALLON / 2854 L CAPACITY
MAX. EARTH COVER 3.0 FT



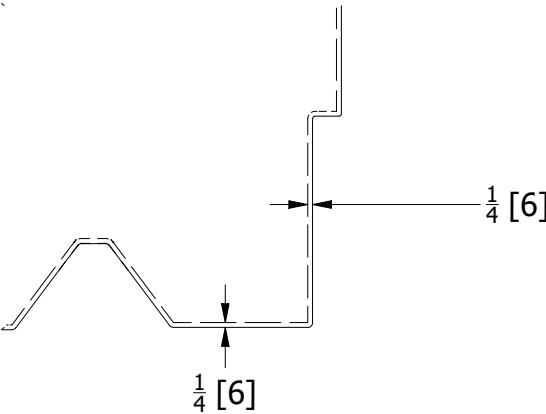
ALL DIMENSIONS ARE IN INCHES, NOMINAL, AND SUBJECT TO CHANGE WITHOUT NOTICE.
ALL DIMENSIONS ON ROTATIONALLY MOLDED PARTS ARE SUBJECT TO A ±3% TOLERANCE

DRAWN Todd Bolzer	9/21/2020	 NORWESCO, INC., ST. BONIFACIUS, MN		
CHECKED		TITLE		
QA		825 US GALLON LOW PROFILE CISTERN		
MFG				
APPROVED				
		SIZE B	DWG NO 43569	REV
		SCALE: 1/16	SHEET 1 OF 3	



TANK SECTION DETAIL

SINGLE LAYER POLYETHYLENE



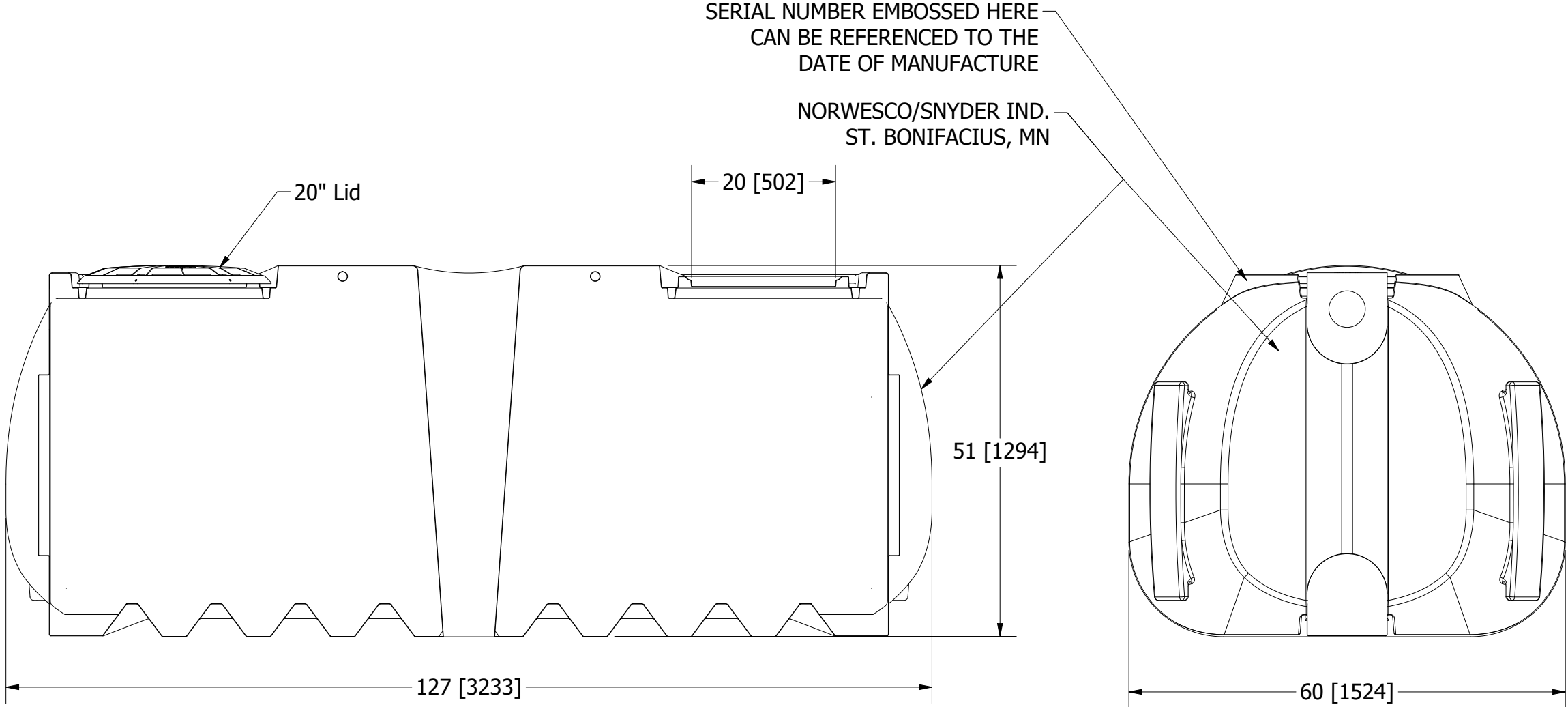
DETAIL B

OPERATING VOLUME: EFFLUENT CHAMBER: 754 US GALLONS/2854 L


DRAWN Todd Bolzer	9/21/2020	<div>NORWESCO, INC., ST. BONIFACIUS, MN</div> <div>TITLE</div> <div>825 US GALLON LOW PROFILE CISTERN</div> <div> <div>SIZE</div> <div>B</div> <div>DWG NO</div> <div>43569</div> <div>REV</div> </div>			
CHECKED					
QA					
MFG					
APPROVED					
		SCALE: 1/16		SHEET 2 OF 3	

MATERIAL: HIGH-DENSITY POLYETHYLENE
NSF 61 LISTED
1175 US GALLONS WORKING CAPACITY

REVISION HISTORY				
ZONE	REV	DESCRIPTION	DATE	APPROVED



ALL DIMENSIONS ARE IN INCHES, NOMINAL, AND SUBJECT TO CHANGE WITHOUT NOTICE.
ALL DIMENSIONS ON ROTATIONALLY MOLDED PARTS ARE SUBJECT TO A ±3% TOLERANCE

DRAWN Todd Bolzer	9/21/2020	<div> NORWESCO NORWESCO, INC., ST. BONIFACIUS, MN TITLE 825 US GALLON LOW PROFILE CISTERN</div>		
CHECKED				
QA				
MFG				
APPROVED				
		SIZE B	DWG NO 43569	REV
		SCALE: 1/16	SHEET 3 OF 3	