

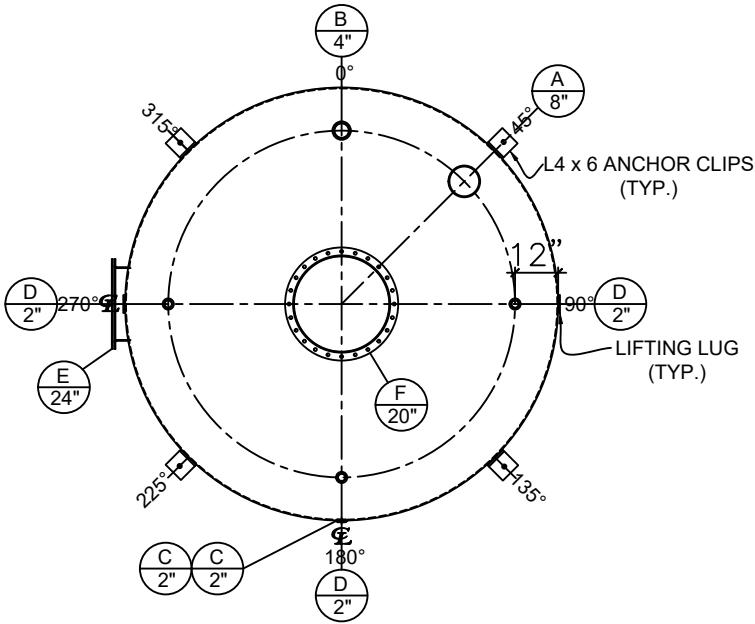
FRONT VIEW

NOTES:


- A. Material: H.R. Carbon Steel.
- B. Design Pressure: Atmospheric.
- C. Design Temperature: Ambient.
- D. Built & labeled per U.L. spec. #142.
- E. Exterior: one coat gray primer.
- F. All fittings to be protected for shipment.
- G. Customer to verify nozzle sizes, locations and quantities.

NOZZLE SCHEDULE

ITEM	SIZE	RATING	TYPE	MATL	PROJ. IN	PROJ. OUT	REMARKS	NOTES
A	8"	N.P.T.	H. CPL.	C.S.	STD.	STD.	-	EMERGENCY VENT OPENING
B	4"	N.P.T.	CPL.	C.S.	STD.	STD.	-	-
C	2"	N.P.T.	W.F.	C.S.	STD.	STD.	-	-
D	2"	N.P.T.	CPL.	C.S.	STD.	STD.	-	-
E	24"	N.P.T.	MANWAY	C.S.	STD.	STD.	TIGHT BOLTED	DOUBLE PUNCHED
F	20"	N.P.T.	MANWAY	C.S.	STD.	STD.	TIGHT BOLTED	SINGLE PUNCHED



PLAN VIEW

APPROVAL FOR CONSTRUCTION SCHEDULE A - MASTER TERMS & CONDITION OF SALE*		SALES ORDER:-		WEIGHT (LBS): 11750	
<input type="checkbox"/> APPROVED AS DRAWN.				All units inches unless stated otherwise	
<input type="checkbox"/> APPROVED WITH NOTED CHANGES. CONSTRUCTION WILL BE SCHEDULED WHEN SIGNED DRAWING AND CONFIRMED ORDER ARE RECEIVED.		Phone: 870-735-4473			
SIGNATURE: _____		DESCRIPTION:			
DATE: _____		15,000 Gallon 120" I.D. x 26'-0" Shell Height Single Wall Vertical Tank			
*All pages of this Schedule A are incorporated by reference and are a part of the additional terms of the Master Terms & Conditions of Sale. www.newberrytanks.com/masterterms.pdf		CUSTOMER:		P.O.#	
		DATE: 4/6/2023		DRAWN BY: AJC	
		SCALE:		SHEET 1 OF 1	
		DWG.# NB15000SWV120250			