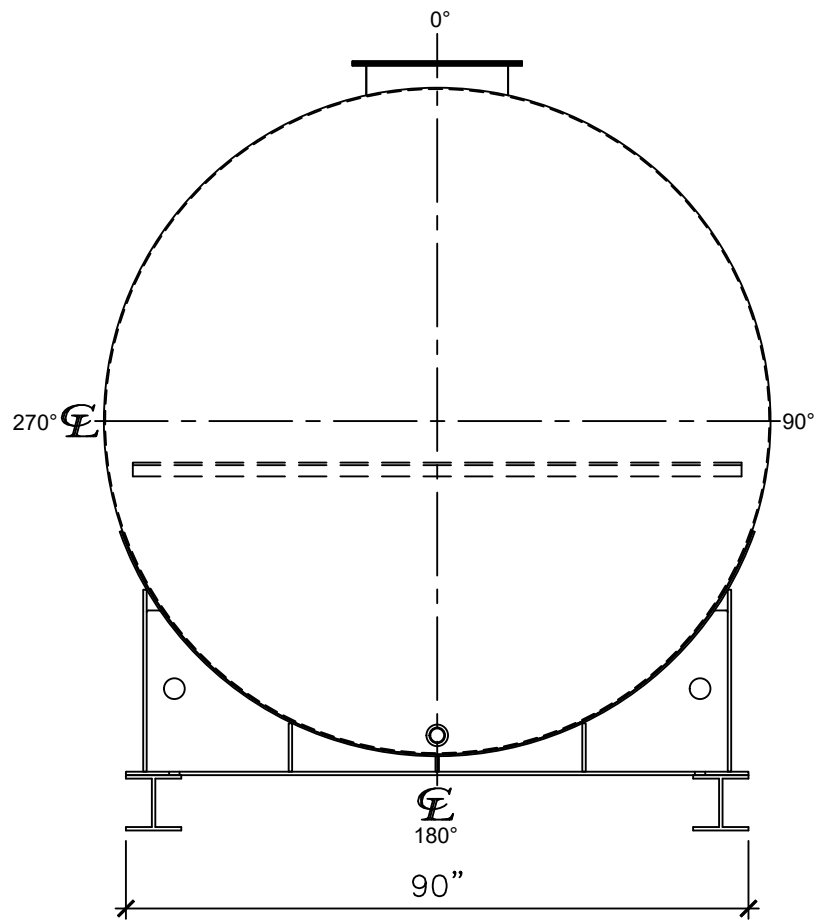
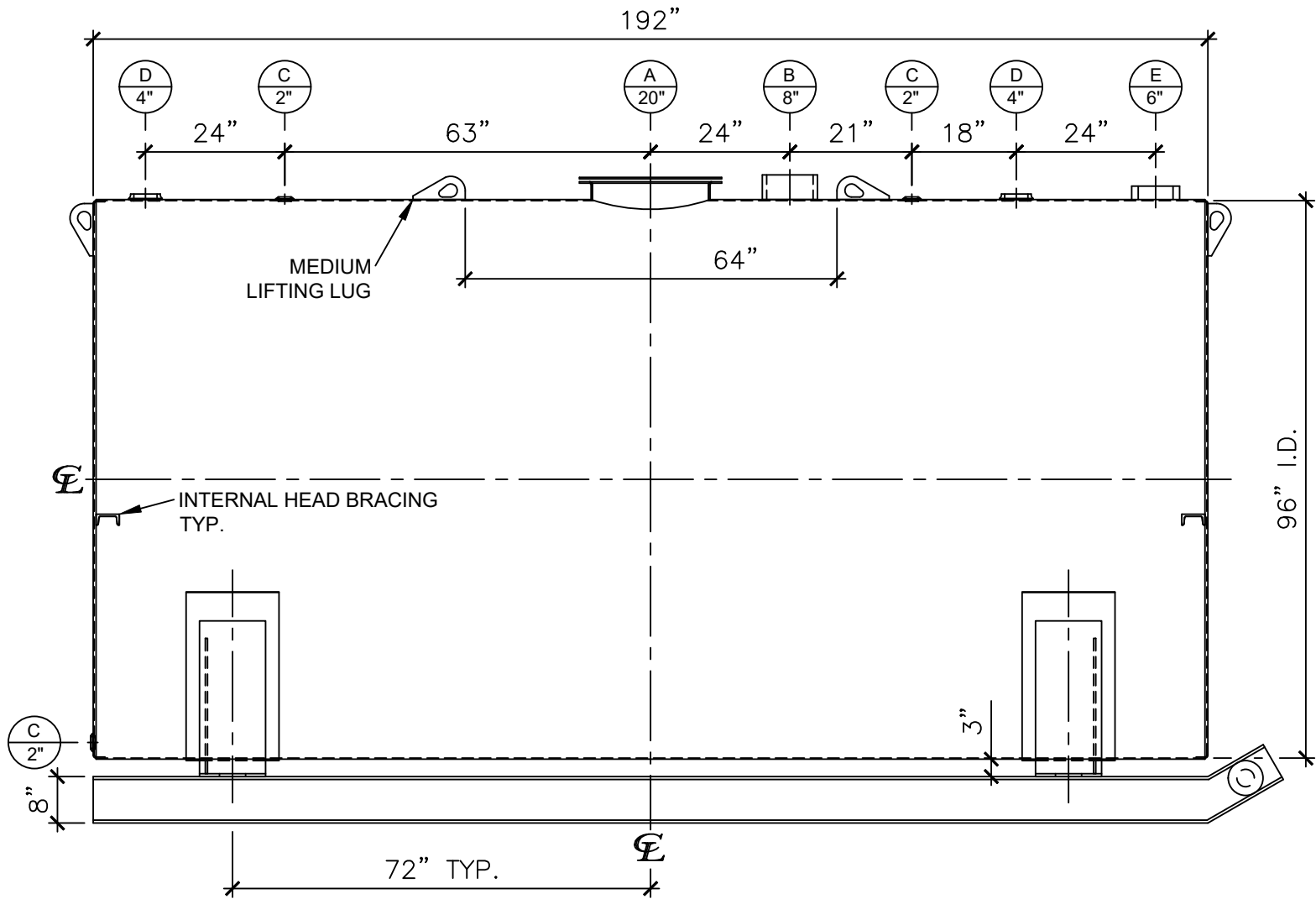


NOZZLE SCHEDULE								
ITEM	SIZE	RATING	TYPE	MATL	PROJ. IN	PROJ. OUT	REMARKS	NOTES
A	20"	U.L.	M.W.	C.S.	STD.	STD.	SINGLE PUNCHED	TIGHT BOLTED
B	8"	N.P.T.	H.CPL.	C.S.	STD.	STD.	-	EMERGENCY VENT OPENING
C	2"	N.P.T.	W.F.	C.S.	STD.	STD.	-	-
D	4"	N.P.T.	W.F.	C.S.	STD.	STD.	-	-
E	6"	N.P.T.	H.CPL.	C.S.	STD.	STD.	-	-




LEFT SIDE



FRONT VIEW

- NOTES:
- A. Material: H.R. Carbon Steel.
  - B. Design Pressure: Atmospheric.
  - C. Design Temperature: Ambient.
  - D. Built & labeled per U.L. spec. #142.
  - E. Exterior: Gray primer included; see Sales Order for top coat.
  - F. All fittings to be protected for shipment.
  - G. Customer to verify nozzle sizes, locations, and quantities.
  - H. Saddles/skids may require shimming or grouting during installation.

APPROVAL FOR CONSTRUCTION SCHEDULE A - MASTER TERMS & CONDITION OF SALE*			SALES ORDER:		WEIGHT (LBS): 6675	
<input type="checkbox"/> APPROVED AS DRAWN.			<div><b>Newberry Tanks</b> New Thinking</div> <div>Phone: 870-735-4473</div>			
<input type="checkbox"/> APPROVED WITH NOTED CHANGES. CONSTRUCTION WILL BE SCHEDULED WHEN SIGNED DRAWING AND CONFIRMED ORDER ARE RECEIVED.						
SIGNATURE: _____			DESCRIPTION: <b>6000 GALLON 96" I.D. x 16'-0" O.A.L. SINGLE WALL SKID TANK</b>			
DATE: _____			CUSTOMER: _____		P.O.# _____	
*All pages of this Schedule A are incorporated by reference and are a part of the additional terms of the Master Terms & Conditions of Sale. www.newberrytanks.com/masterterms.pdf			DATE: 06/05/23	SCALE: -	DWG.# NB06000SWS096250	DRAWN BY: WR SHEET 1 OF 1