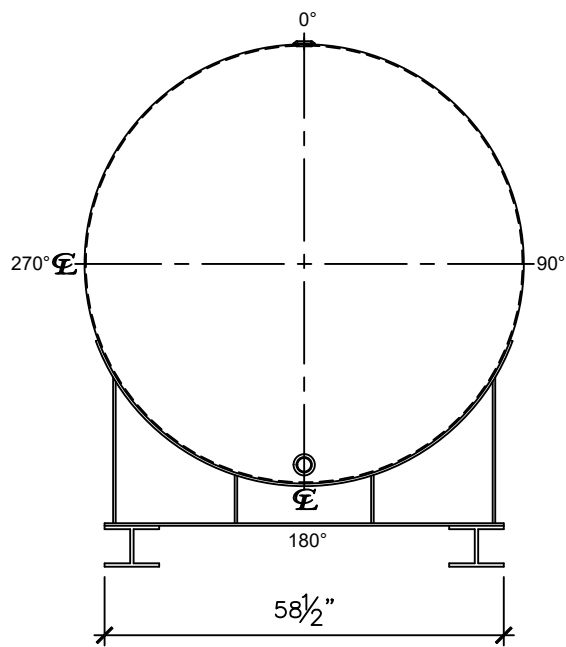
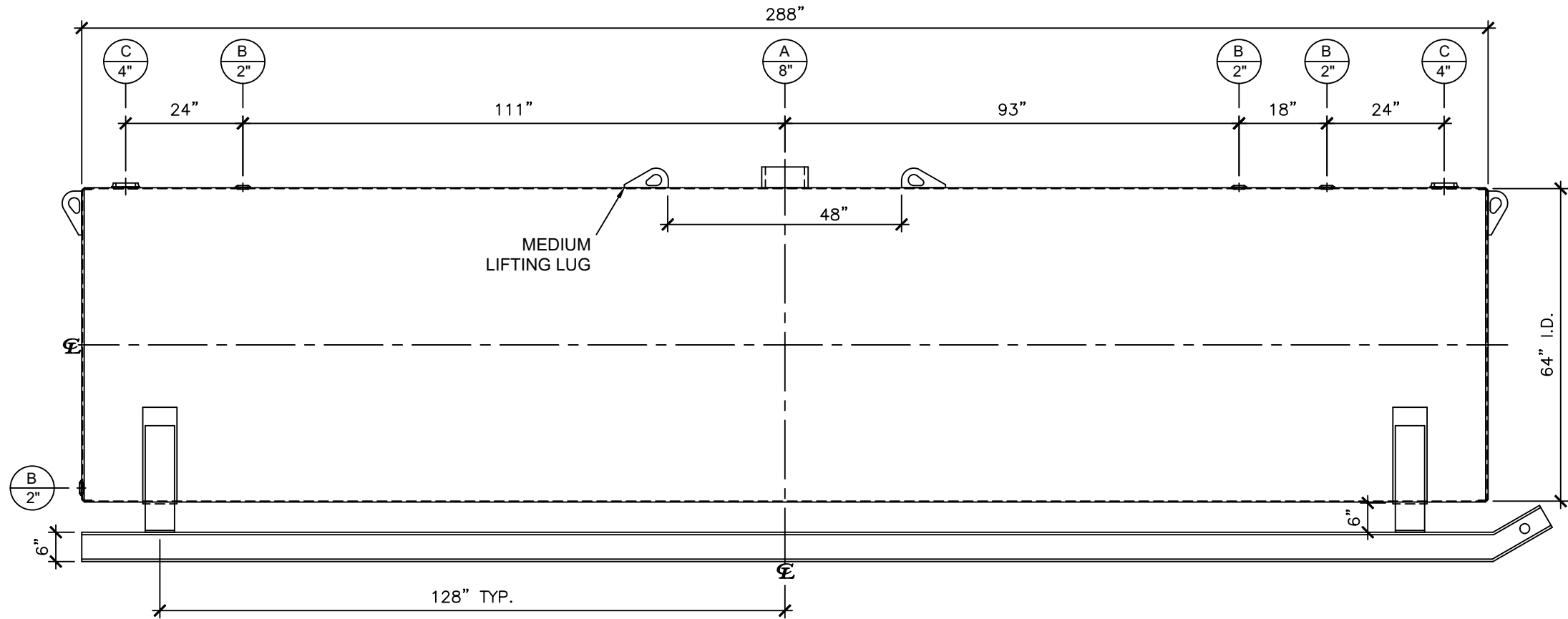


NOZZLE SCHEDULE								
ITEM	SIZE	RATING	TYPE	MATL	PROJ. IN	PROJ. OUT	REMARKS	NOTES
A	8"	N.P.T.	H.CPL.	C.S.	STD.	STD.	-	EMERGENCY VENT OPENING
B	2"	N.P.T.	W.F.	C.S.	STD.	STD.	-	-
C	4"	N.P.T.	W.F.	C.S.	STD.	STD.	-	-




LEFT SIDE



FRONT VIEW

- NOTES:**
- A. Material: H.R. Carbon Steel.
  - B. Design Pressure: Atmospheric.
  - C. Design Temperature: Ambient.
  - D. Built & labeled per U.L. spec. #142.
  - E. Exterior: Gray primer included; see Sales Order for top coat.
  - F. All fittings to be protected for shipment.
  - G. Customer to verify nozzle sizes, locations, and quantities.
  - H. Saddles/skids may require shimming or grouting during installation.

APPROVAL FOR CONSTRUCTION SCHEDULE A - MASTER TERMS & CONDITION OF SALE*			SALES ORDER:		WEIGHT (LBS): 5150	
<input type="checkbox"/> APPROVED AS DRAWN.			 Newberry Tanks New Thinking		All units inches unless stated otherwise	
<input type="checkbox"/> APPROVED WITH NOTED CHANGES. CONSTRUCTION WILL BE SCHEDULED WHEN SIGNED DRAWING AND CONFIRMED ORDER ARE RECEIVED.						
SIGNATURE: _____			Phone: 870-735-4473			
DATE: _____			DESCRIPTION: 4000 GALLON 64" I.D. x 24'-0" O.A.L. SINGLE WALL SKID TANK			
*All pages of this Schedule A are incorporated by reference and are a part of the additional terms of the Master Terms & Conditions of Sale. www.newberrytanks.com/masterterms.pdf			CUSTOMER: -		P.O.# -	
DATE: 06/05/23		SCALE:	DWG.#	DRAWN BY: WR		
			NB04000SWS06407G	SHEET 1 OF 1		