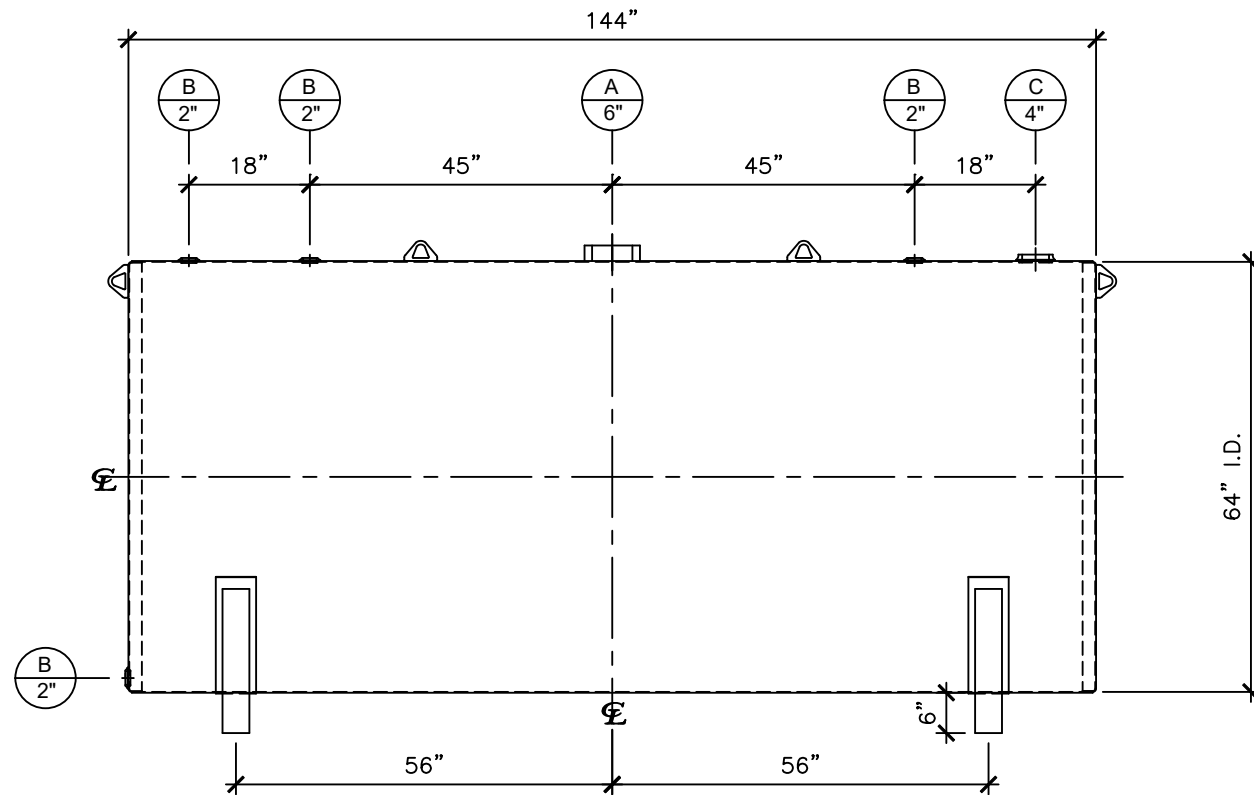


LEFT SIDE



FRONT VIEW

NOZZLE SCHEDULE						
ITEM	SIZE	RATING	TYPE	MATL	REMARKS	NOTES
A	6"	N.P.T.	H.CPL.	C.S.	-	EMERGENCY VENT OPENING
B	2"	N.P.T.	W.F.	C.S.	-	-
C	4"	N.P.T.	W.F.	C.S.	-	-

NOTES:

- A. Material: H.R. Carbon Steel.
- B. Design Pressure: Atmospheric.
- C. Design Temperature: Ambient.
- D. Built & Labeled per U.L. Spec. #142.
- E. Exterior: Gray primer included; see Sales Order for top coat.
- F. All Fittings to be protected for shipment.
- G. Customer to verify nozzle sizes, locations, and quantities.
- H. Saddles/skids may require shimming or grouting during installation.


APPROVAL FOR CONSTRUCTION  
SCHEDULE A - MASTER TERMS &  
CONDITION OF SALE\*

☐ APPROVED AS DRAWN.  
☐ APPROVED WITH NOTED CHANGES.  
CONSTRUCTION WILL BE SCHEDULED  
WHEN SIGNED DRAWING AND  
CONFIRMED ORDER ARE RECEIVED.

SIGNATURE: \_\_\_\_\_  
DATE: \_\_\_\_\_

\*All pages of this Schedule A are incorporated by  
reference and are a part of the additional terms of  
the Master Terms & Conditions of Sale.  
www.newberrytanks.com/masterterms.pdf

SALES ORDER: -

Newberry Tanks  
New Thinking

Phone: 870-735-4473

WEIGHT (LBS): 2200

All units inches  
unless stated  
otherwise

DESCRIPTION:  
2000 GALLON 64" I.D. X 12'-0" O.A.L. SINGLE WALL  
BRACKET TANK

CUSTOMER: \_\_\_\_\_  
P.O.#: \_\_\_\_\_

DATE: \_\_\_\_\_  
SCALE: \_\_\_\_\_  
DWG.# NB02000SWB06407G

DRAWN BY: TC  
SHEET 1 OF 1