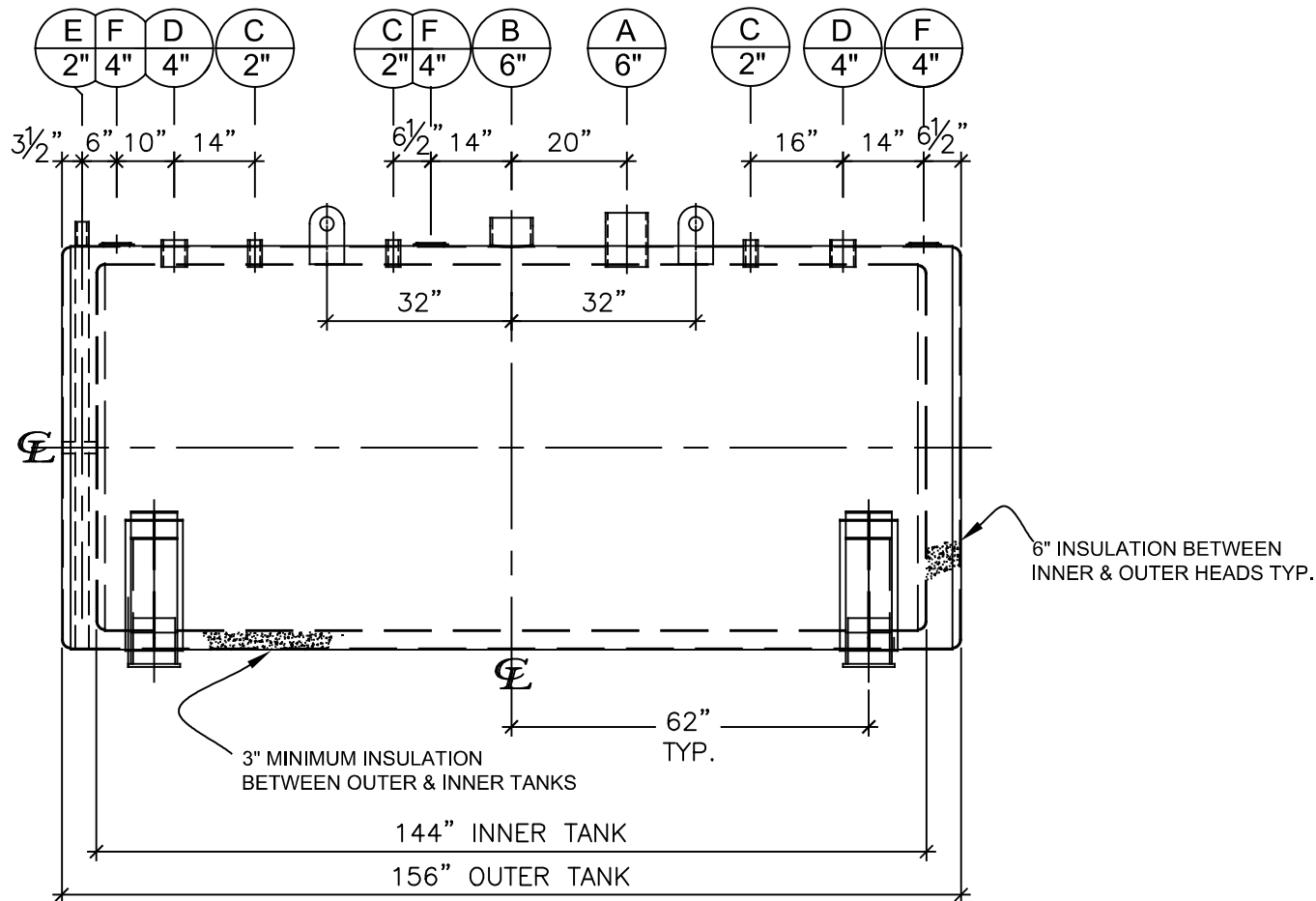


LEFT SIDE



FRONT VIEW

NOTES:

- A. Material: H.R. Carbon Steel.
- B. Design Pressure: Atmospheric.
- C. Design Temperature: Ambient.
- D. Built & labeled per U.L. #142, #2085 & STI Fireguard Specifications.
- E. Interstice to be filled w/ 3" min. thermal insulation per Fireguard specs.
- F. Exterior: Blast & apply one shop coat WHITE enamel.
- G. All fittings to be labeled and protected for shipment.
- H. Customer to verify nozzle sizes, locations and quantities.
- I. Saddles/skids may require shimming or grouting during installation.

| NOZZLE SCHEDULE |      |        |        |      |          |           |           |                        |
|-----------------|------|--------|--------|------|----------|-----------|-----------|------------------------|
| ITEM            | SIZE | RATING | TYPE   | MATL | PROJ. IN | PROJ. OUT | REMARKS   | NOTES                  |
| A               | 6"   | N.P.T. | W.F.   | C.S. | STD.     | STD.      | PRIMARY   | EMERGENCY VENT OPENING |
| B               | 6"   | N.P.T. | H.CPL. | C.S. | STD.     | STD.      | SECONDARY | EMERGENCY VENT OPENING |
| C               | 2"   | N.P.T. | CPL.   | C.S. | STD.     | STD.      | -         | -                      |
| D               | 4"   | N.P.T. | CPL.   | C.S. | STD.     | STD.      | -         | -                      |
| E               | 2"   | N.P.T. | PIPE   | C.S. | STD.     | STD.      | -         | MONITORING PORT        |
| F               | 4"   | N.P.T. | CPL.   | C.S. | STD.     | STD.      | -         | INTERSTICE FILL        |

|   |  |        |   |                               |                    |  |
|---|--|--------|---|-------------------------------|--------------------|--|
| APPROVAL FOR CONSTRUCTION<br>SCHEDULE A - MASTER TERMS &<br>CONDITION OF SALE*  |  |        | SALES ORDER:  |                               | WEIGHT (LBS): 7800 |  |
| <input type="checkbox"/> APPROVED AS DRAWN  |  |        | <div>Newberry Tanks<br/>New Thinking</div> |                               |                    |  |
| <input type="checkbox"/> APPROVED WITH NOTED CHANGES.<br>CONSTRUCTION WILL BE SCHEDULED<br>WHEN SIGNED DRAWING AND<br>CONFIRMED ORDER ARE RECEIVED.   |  |        | All units inches<br>unless stated<br>otherwise  |                               |                    |  |
| SIGNATURE: _____  |  |        | Phone: 870-735-4473   |                               |                    |  |
| DATE: _____   |  |        | DESCRIPTION:<br>2000 Gallon 64" I.D. x 12'-0" O.A.L. Fireguard Saddle Tank  |                               |                    |  |
| *All pages of this Schedule A are incorporated by<br>reference and are a part of the additional terms of<br>the Master Terms & Conditions of Sale.<br>www.newberrytanks.com/masterterms.pdf |  |        | CUSTOMER:   |                               | P.O.#              |  |
| DATE:<br>3/8/2023   |  | SCALE: | DWG.#<br>NB02000FGD06407G   | DRAWN BY: AJC<br>SHEET 1 OF 1 |                    |  |