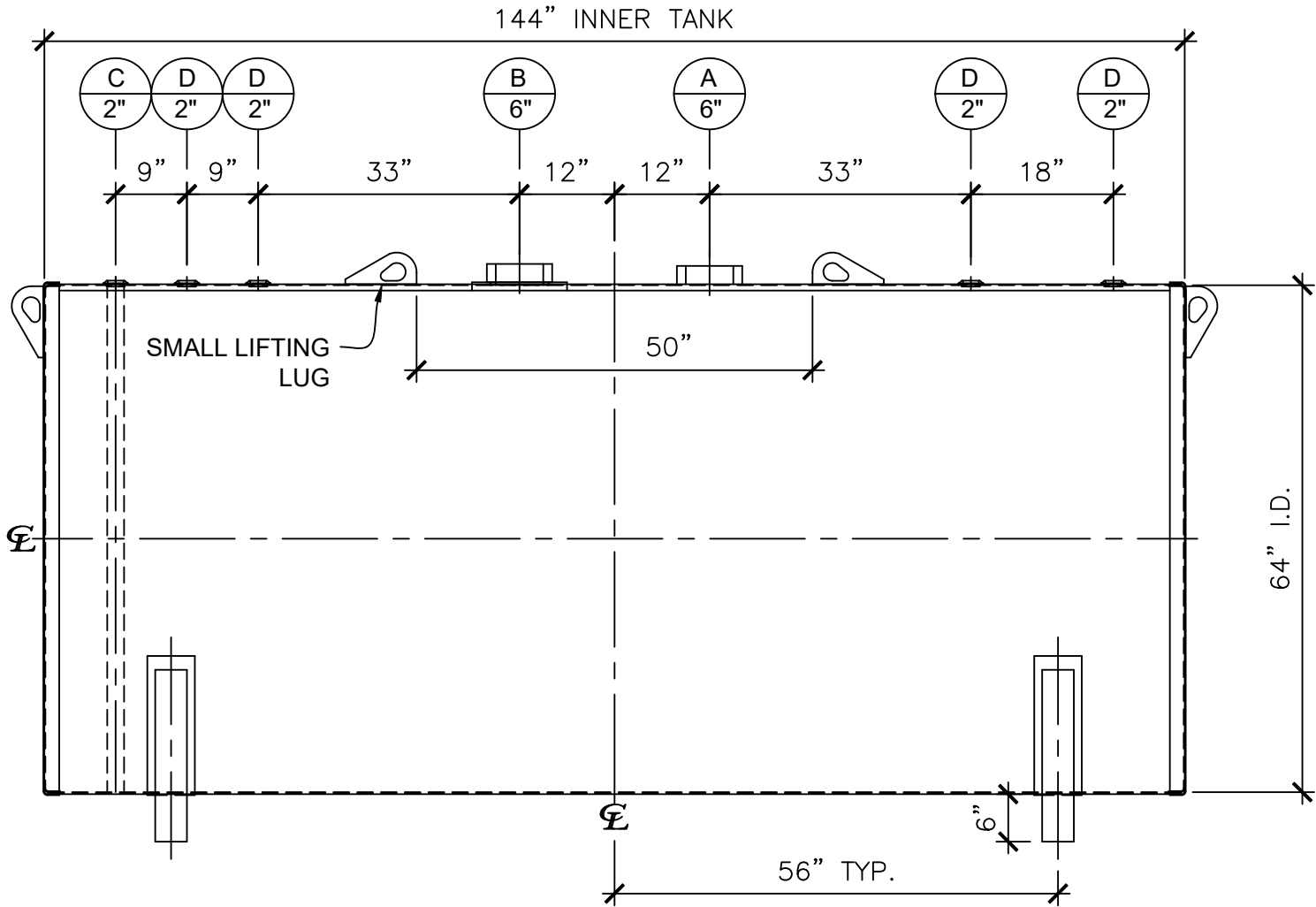
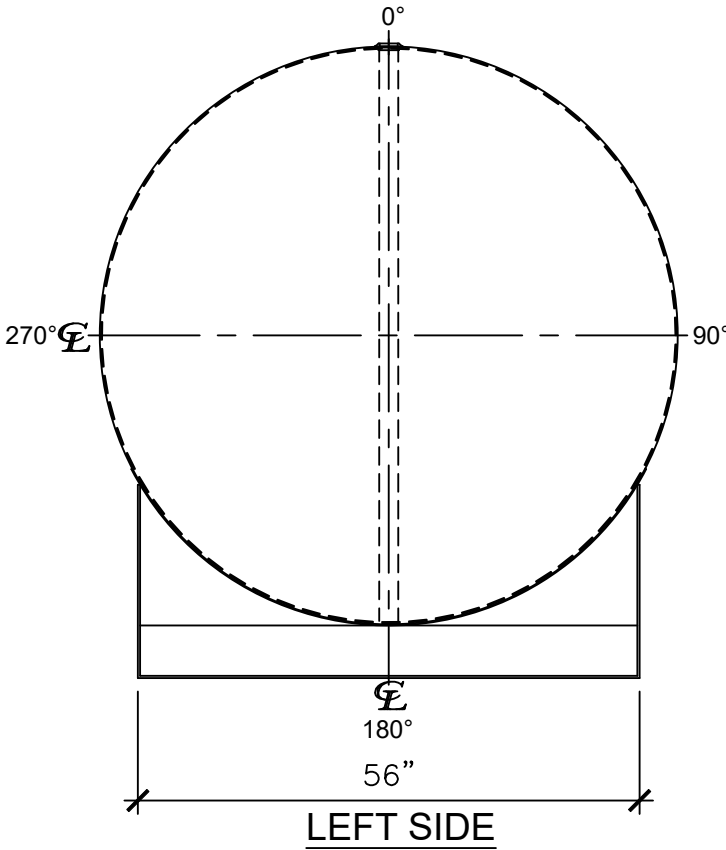


NOZZLE SCHEDULE						
ITEM	SIZE	RATING	TYPE	MATL	REMARKS	NOTES
A	6"	N.P.T.	H.CPL.	C.S.	PRIMARY	EMERGENCY VENT OPENING
B	6"	N.P.T.	H.CPL.	C.S.	SECONDARY	EMERGENCY VENT OPENING
C	2"	N.P.T.	M.F.	C.S.	-	MONITORING PORT
D	2"	N.P.T.	W.F.	C.S.	-	-



NOTES:

A. Material: H.R. Carbon Steel.

B. Design Pressure: Atmospheric.

C. Design Temperature: Ambient.


D. Built & Labeled per U.L. Spec. #142.

E. Exterior: Gray primer included; see Sales Order for top coat.

F. All Fittings to be protected for shipment.

G. Customer to verify nozzle sizes, locations, and quantities.

H. Saddles/skids may require shimming or grouting during installation.

APPROVAL FOR CONSTRUCTION SCHEDULE A - MASTER TERMS & CONDITION OF SALE*			SALES ORDER:		WEIGHT (LBS): 3750	
<input type="checkbox"/> APPROVED AS DRAWN.			<div><div>Newberry Tanks New Thinking</div></div> <div>Phone: 870-735-4473</div>			
<input type="checkbox"/> APPROVED WITH NOTED CHANGES. CONSTRUCTION WILL BE SCHEDULED WHEN SIGNED DRAWING AND CONFIRMED ORDER ARE RECEIVED.						
SIGNATURE: _____			DESCRIPTION: 2000 GALLON 64" I.D. x 12'-0" O.A.L. DOUBLE WALL BRACKET TANK			
DATE: _____			CUSTOMER: _____		P.O.#: _____	
*All pages of this Schedule A are incorporated by reference and are a part of the additional terms of the Master Terms & Conditions of Sale. www.newberrytanks.com/masterterms.pdf			DATE: 06/26/23	SCALE: _____	DWG.# NB02000DWB06407G	DRAWN BY: WR SHEET 1 OF 1