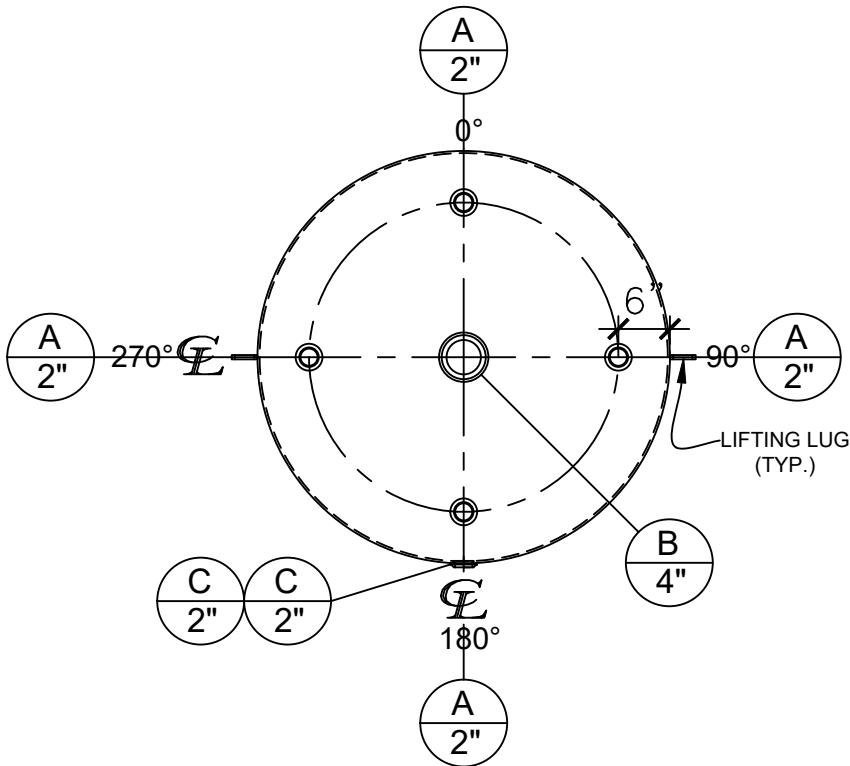


FRONT VIEW

NOZZLE SCHEDULE


ITEM	SIZE	RATING	TYPE	MATL	PROJ. IN	PROJ. OUT	REMARKS	NOTES
A	2"	N.P.T.	W.F.	C.S.	STD.	STD.	-	-
B	4"	N.P.T.	H.CPL.	C.S.	STD.	STD.	-	EMERGENCY VENT OPENING
C	2"	N.P.T.	W.F.	C.S.	STD.	STD.	-	-



PLAN VIEW

NOTES:

- A. Material: H.R. Carbon Steel.
- B. Design Pressure: Atmospheric.
- C. Design Temperature: Ambient.
- D. Built & labeled per U.L. spec. #142.
- E. Exterior: Gray primer included; see Sales Order for top coat.
- F. All fittings to be protected for shipment.
- G. Customer to verify nozzle sizes, locations and quantities.

APPROVAL FOR CONSTRUCTION SCHEDULE A - MASTER TERMS & CONDITION OF SALE*			SALES ORDER:-		WEIGHT (LBS): 750	
<input type="checkbox"/> APPROVED AS DRAWN.			 Newberry Tanks New Thinking Phone: 870-735-4473		All units inches unless stated otherwise	
<input type="checkbox"/> APPROVED WITH NOTED CHANGES, CONSTRUCTION WILL BE SCHEDULED WHEN SIGNED DRAWING AND CONFIRMED ORDER ARE RECEIVED.						
SIGNATURE: _____			DESCRIPTION: 550 Gallon 48" I.D. x 6'-0" Shell Height Single Wall Vertical Tank			
DATE: _____			CUSTOMER:		P.O.#	
*All pages of this Schedule A are incorporated by reference and are a part of the additional terms of the Master Terms & Conditions of Sale. www.newberrytanks.com/masterterms.pdf			DATE: 4/6/2023	SCALE:	DWG.# NB00550SWV04812G	DRAWN BY: AJC SHEET 1 OF 1