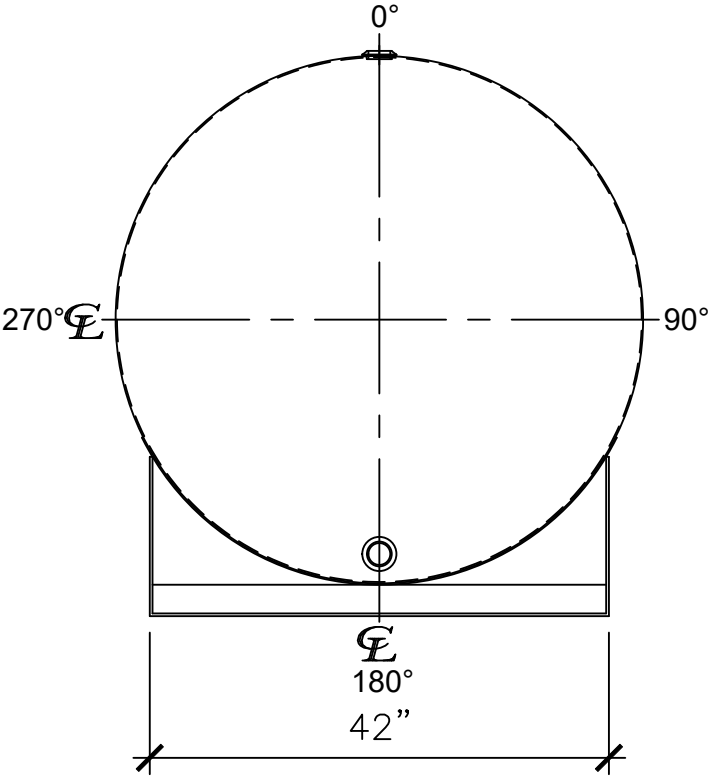
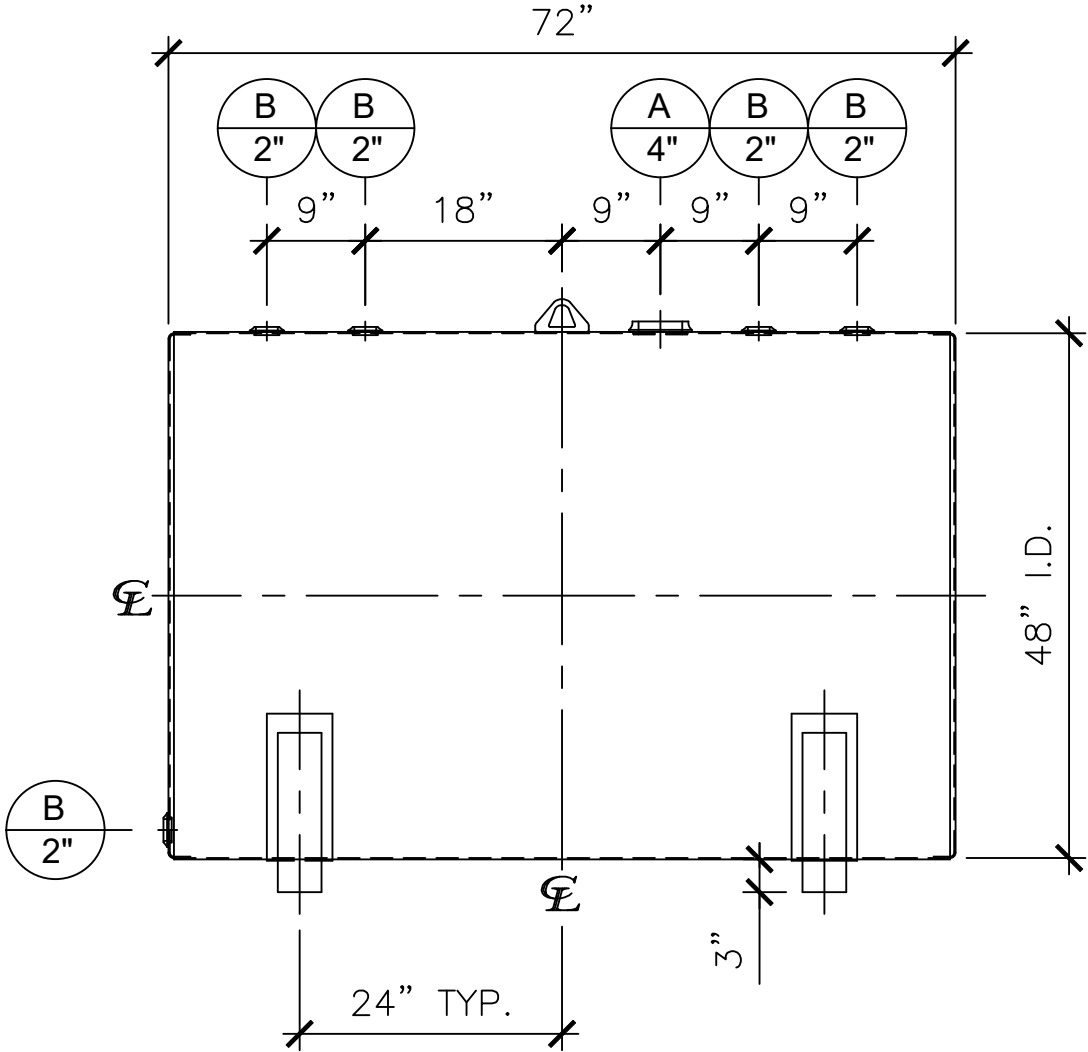


NOZZLE SCHEDULE						
ITEM	SIZE	RATING	TYPE	MATL	REMARKS	NOTES
A	4"	N.P.T.	W.F.	C.S.	-	EMERGENCY VENT OPENING
B	2"	N.P.T.	W.F.	C.S.	-	-




LEFT SIDE



FRONT VIEW

NOTES:

- A. Material: H.R. Carbon Steel.
- B. Design Pressure: Atmospheric.
- C. Design Temperature: Ambient.
- D. Built & Labeled per U.L. Spec. #142.
- E. Exterior: Gray primer included; see Sales Order for top coat.
- F. All Fittings to be protected for shipment.
- G. Customer to verify nozzle sizes, locations, and quantities.
- H. Saddles/skids may require shimming or grouting during installation.

<div>APPROVAL FOR CONSTRUCTION SCHEDULE A - MASTER TERMS & CONDITION OF SALE*</div> <div><input type="checkbox"/> APPROVED AS DRAWN.</div> <div><input type="checkbox"/> APPROVED WITH NOTED CHANGES. CONSTRUCTION WILL BE SCHEDULED WHEN SIGNED DRAWING AND CONFIRMED ORDER ARE RECEIVED.</div> <div>SIGNATURE: _____</div> <div>DATE: _____</div> <div><small>*All pages of this Schedule A are incorporated by reference and are a part of the additional terms of the Master Terms & Conditions of Sale. www.newberrytanks.com/masterterms.pdf</small></div>			SALES ORDER:		WEIGHT (LBS): 750	
			<div><div>Newberry Tanks New Thinking</div><div>Phone: 870-735-4473</div></div>			
DESCRIPTION: 550 GALLON 48" I.D. x 6'-0" O.A.L. SINGLE WALL BRACKET TANK						
CUSTOMER: -					P.O.# -	
DATE: 07/05/23	SCALE:	DWG.# NB00550SWB04812G	DRAWN BY: WR SHEET 1 OF 1			