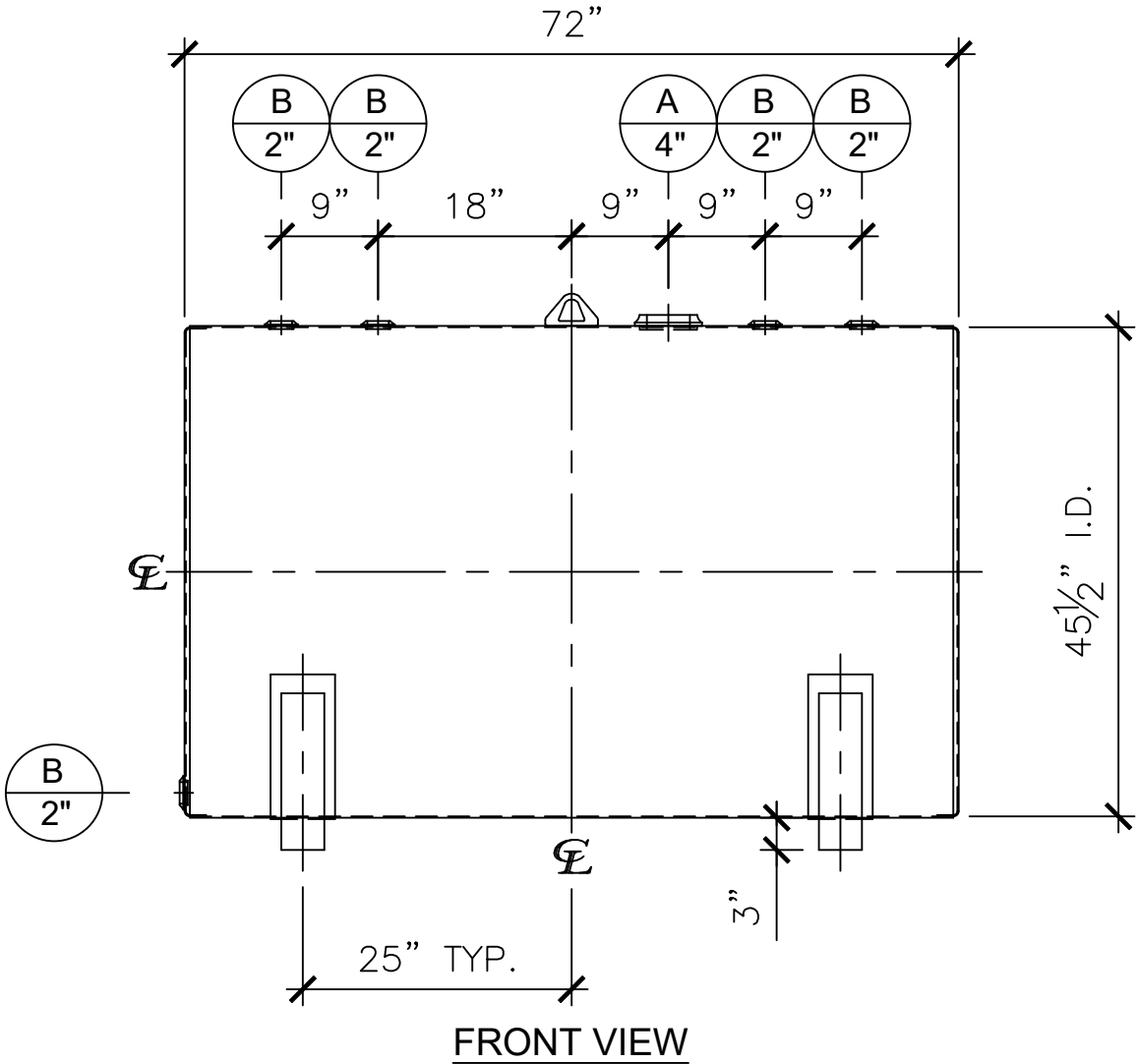
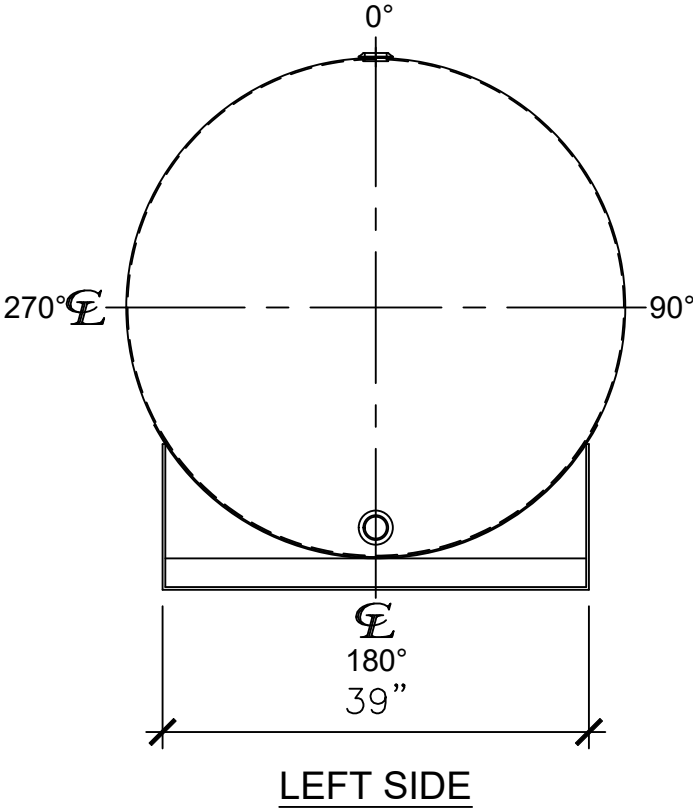



NOZZLE SCHEDULE						
ITEM	SIZE	RATING	TYPE	MATL	REMARKS	NOTES
A	4"	N.P.T.	W.F.	C.S.	-	EMERGENCY VENT OPENING
B	2"	N.P.T.	W.F.	C.S.	-	-



NOTES:

- A. Material: H.R. Carbon Steel.
- B. Design Pressure: Atmospheric.
- C. Design Temperature: Ambient.
- D. Built & Labeled per U.L. Spec. #142.
- E. Exterior: Gray primer included; see Sales Order for top coat.
- F. All Fittings to be protected for shipment.
- G. Customer to verify nozzle sizes, locations, and quantities.
- H. Saddles/skids may require shimming or grouting during installation.

APPROVAL FOR CONSTRUCTION SCHEDULE A - MASTER TERMS & CONDITION OF SALE*			SALES ORDER:		WEIGHT (LBS): 700	
<input type="checkbox"/> APPROVED AS DRAWN.			<div> Newberry Tanks New Thinking Phone: 870-735-4473</div>			
<input type="checkbox"/> APPROVED WITH NOTED CHANGES, CONSTRUCTION WILL BE SCHEDULED WHEN SIGNED DRAWING AND CONFIRMED ORDER ARE RECEIVED.						
SIGNATURE: _____			DESCRIPTION: 500 GALLON 45 1/2" I.D. x 6'-0" O.A.L. SINGLE WALL BRACKET TANK			
DATE: _____			CUSTOMER: _____		P.O.# _____	
*All pages of this Schedule A are incorporated by reference and are a part of the additional terms of the Master Terms & Conditions of Sale. www.newberrytanks.com/masterterms.pdf			DATE: 07/05/23	SCALE:	DWG.# NB00500SWB45512G	DRAWN BY: WR SHEET 1 OF 1