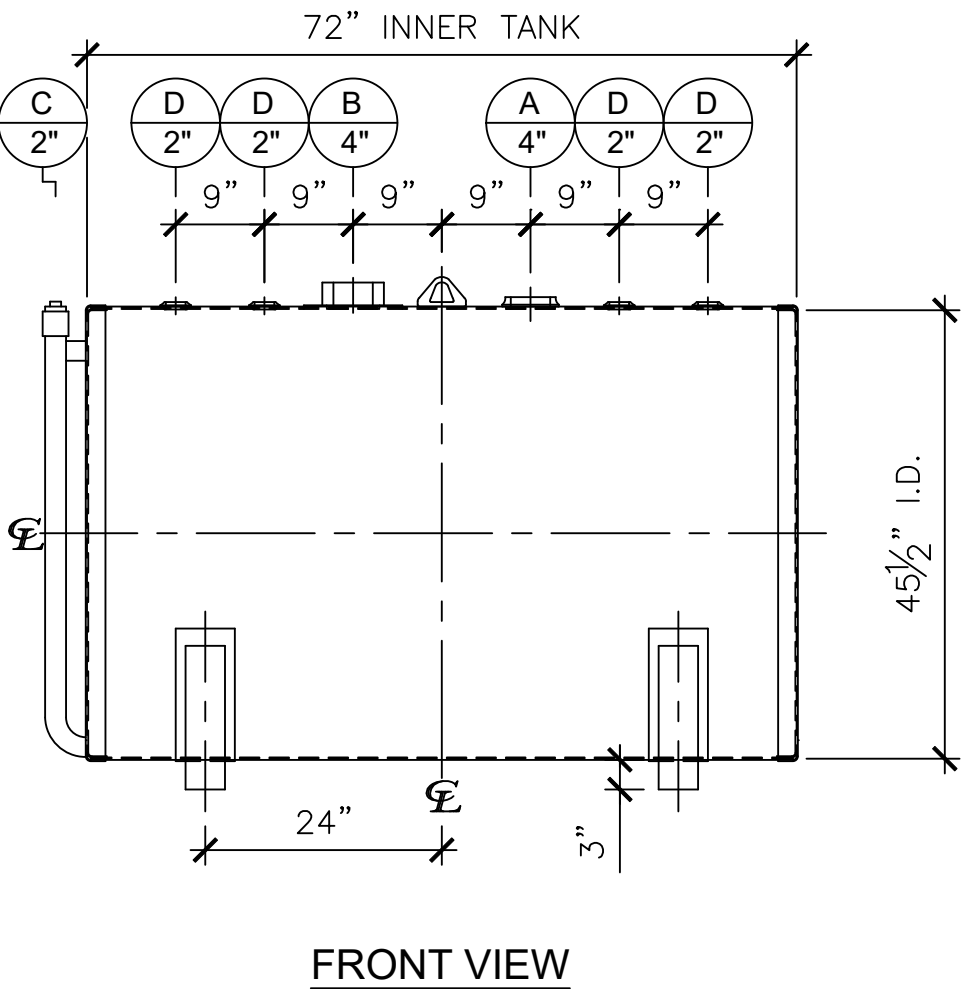
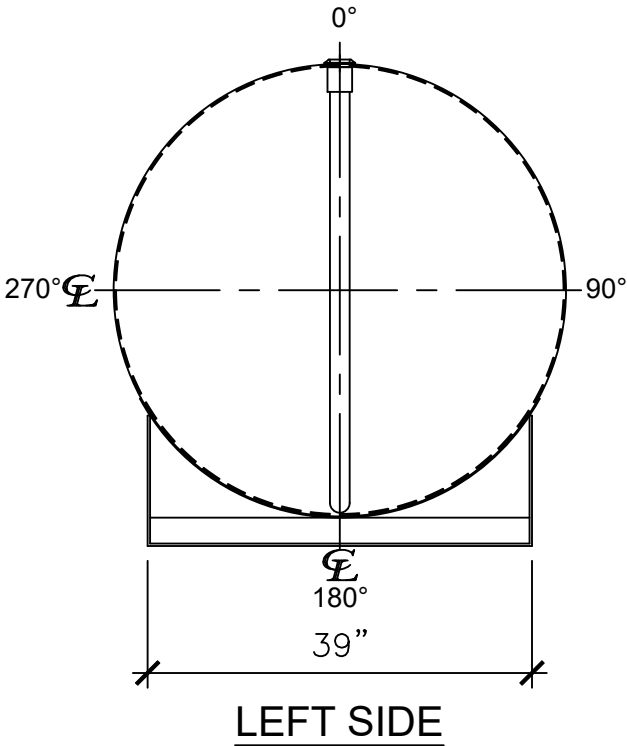



NOZZLE SCHEDULE						
ITEM	SIZE	RATING	TYPE	MATL	REMARKS	NOTES
A	4"	N.P.T.	W.F.	C.S.	PRIMARY	EMERGENCY VENT OPENING
B	4"	N.P.T.	H.CPL.	C.S.	SECONDARY	EMERGENCY VENT OPENING
C	2"	N.P.T.	PIPE	C.S.	-	MONITORING PORT
D	2"	N.P.T.	W.F.	C.S.	-	-



- NOTES:
- A. Material: H.R. Carbon Steel.
  - B. Design Pressure: Atmospheric.
  - C. Design Temperature: Ambient.
  - D. Built & Labeled per U.L. Spec. #142.
  - E. Exterior: Gray primer included; see Sales Order for top coat.
  - F. All Fittings to be protected for shipment.
  - G. Customer to verify nozzle sizes, locations, and quantities.
  - H. Saddles/skids may require shimming or grouting during installation.

<div>APPROVAL FOR CONSTRUCTION SCHEDULE A - MASTER TERMS &amp; CONDITION OF SALE*</div> <div><input type="checkbox"/> APPROVED AS DRAWN.</div> <div><input type="checkbox"/> APPROVED WITH NOTED CHANGES, CONSTRUCTION WILL BE SCHEDULED WHEN SIGNED DRAWING AND CONFIRMED ORDER ARE RECEIVED.</div> <div>SIGNATURE: _____</div> <div>DATE: _____</div> <div><small>*All pages of this Schedule A are incorporated by reference and are a part of the additional terms of the Master Terms &amp; Conditions of Sale. www.newberrytanks.com/masterterms.pdf</small></div>			SALES ORDER:		WEIGHT (LBS): 1100	
			<div><div>Newberry Tanks New Thinking</div><div>Phone: 870-735-4473</div></div> <div>DESCRIPTION: 500 GALLON 45 1/2" I.D. x 6'-0" O.A.L. DOUBLE WALL BRACKET TANK</div> <div>CUSTOMER: -</div> <div>P.O.# -</div> <div>DRAWN BY: WR</div> <div>SHEET 1 OF 1</div>			
DATE: 06/23/23		SCALE:		DWG.# NB00500DWB45512G		