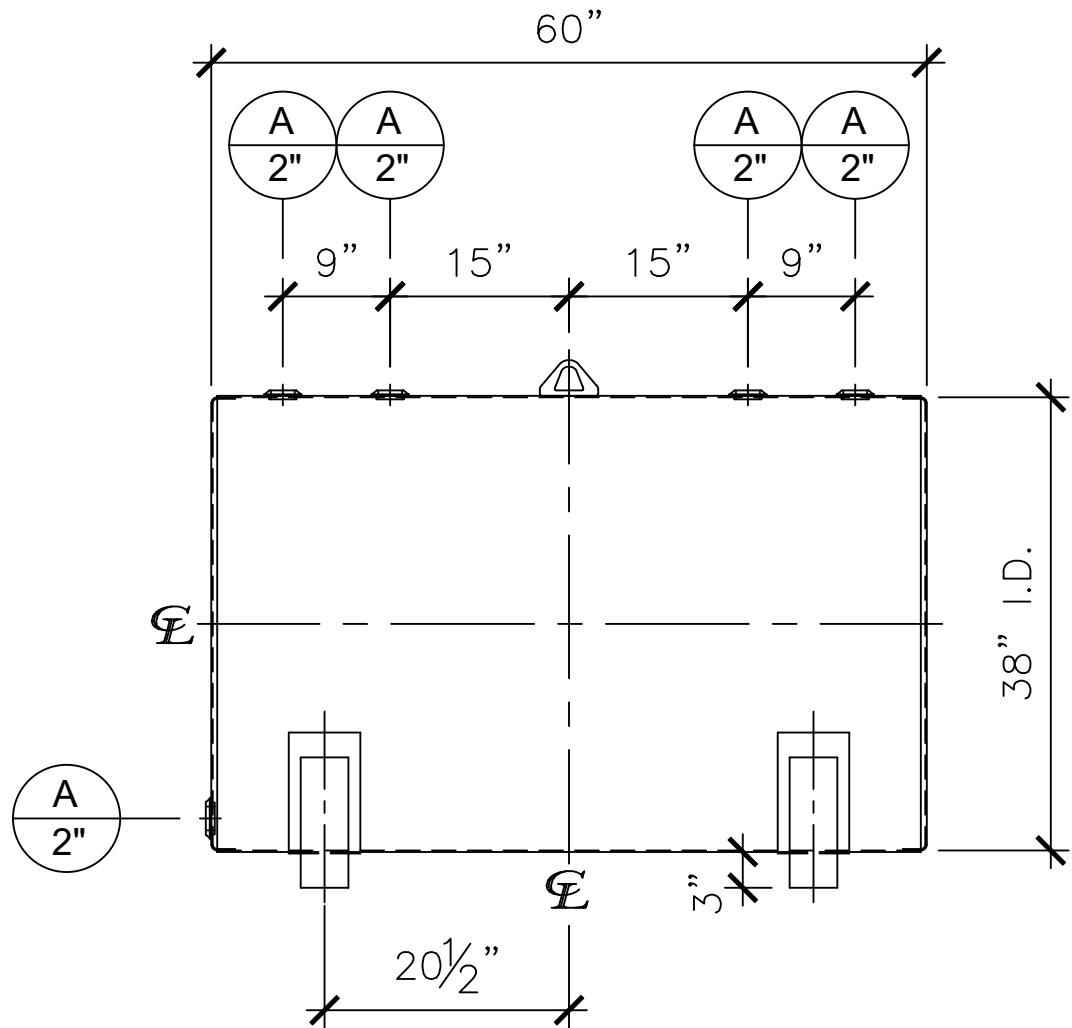


LEFT SIDE




FRONT VIEW

NOTES:

- A. Material: H.R. Carbon Steel.
- B. Design Pressure: Atmospheric.
- C. Design Temperature: Ambient.
- D. Exterior: Gray primer included; see Sales Order for top coat.
- E. All Fittings to be protected for shipment.
- F. Customer to verify nozzle sizes, locations, and quantities.
- G. Saddles/skids may require shimming or grouting during installation.

NOZZLE SCHEDULE

ITEM	SIZE	RATING	TYPE	MATL	REMARKS	NOTES
A	2"	N.P.T.	W.F.	C.S.	-	-

APPROVAL FOR CONSTRUCTION SCHEDULE A - MASTER TERMS & CONDITION OF SALE*			SALES ORDER: -		WEIGHT (LBS): 455	
<input type="checkbox"/> APPROVED AS DRAWN.						
<input type="checkbox"/> APPROVED WITH NOTED CHANGES. CONSTRUCTION WILL BE SCHEDULED WHEN SIGNED DRAWING AND CONFIRMED ORDER ARE RECEIVED.			Phone: 870-735-4473			
SIGNATURE: _____			DESCRIPTION: 300 Gallon 38" I.D. x 5'-0" O.A.L. Single Wall Farm Bracket Tank			
DATE: _____			CUSTOMER: -		P.O.# -	
*All pages of this Schedule A are incorporated by reference and are a part of the additional terms of the Master Terms & Conditions of Sale. www.newberrytanks.com/masterterms.pdf			DATE: 04/12/23	SCALE:	DWG.# NB00300FTB03812G	DRAWN BY: WR SHEET 1 OF 1