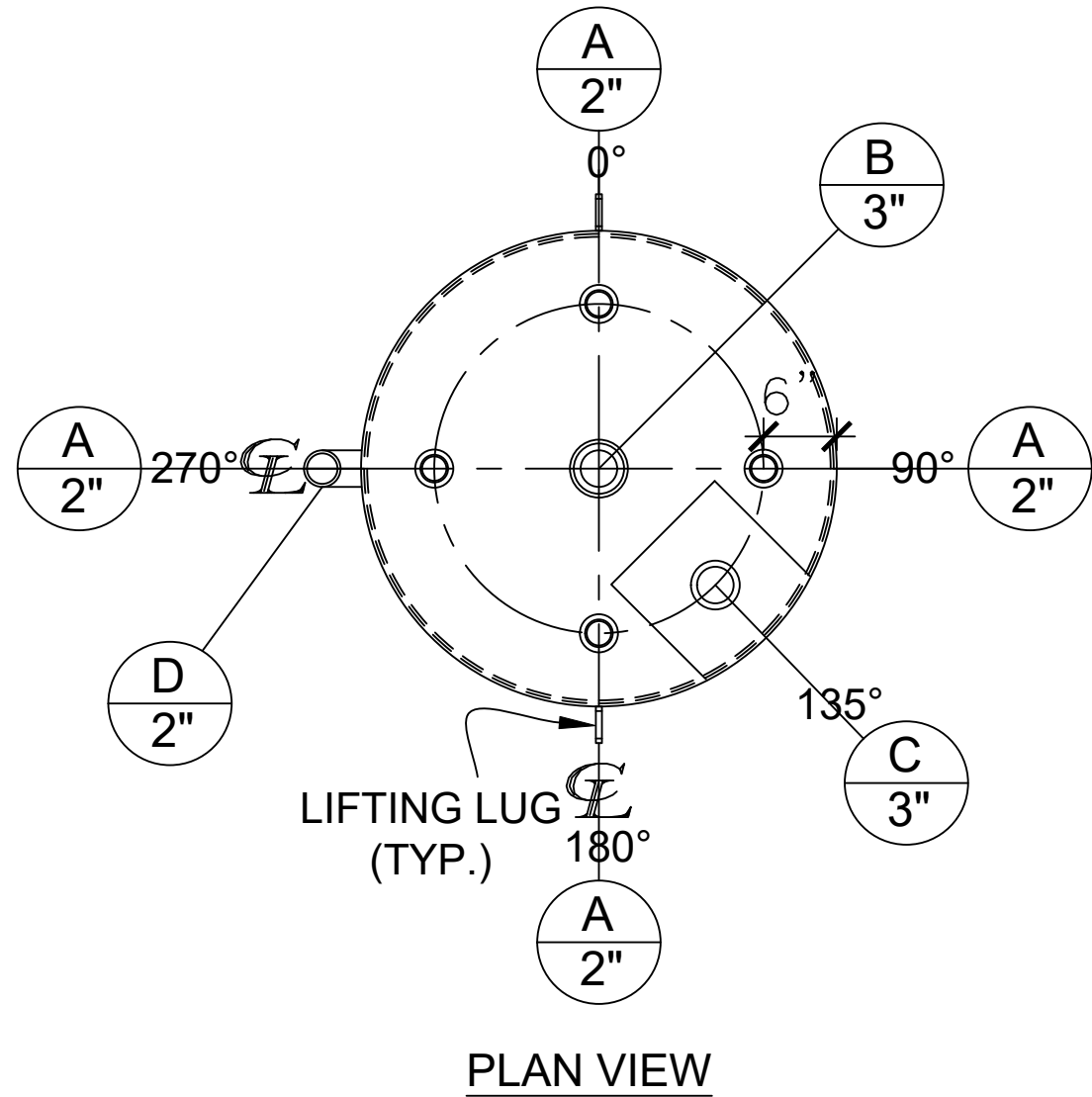



NOZZLE SCHEDULE								
ITEM	SIZE	RATING	TYPE	MATL	PROJ. IN	PROJ. OUT	REMARKS	NOTES
A	2"	N.P.T.	CPL.	C.S.	STD.	STD.	-	-
B	3"	N.P.T.	CPL.	C.S.	STD.	STD.	PRIMARY	EMERGENCY VENT OPENING
C	3"	N.P.T.	CPL.	C.S.	STD.	STD.	SECONDARY	EMERGENCY VENT OPENING
D	2"	N.P.T.	PIPE	C.S.	STD.	STD.	-	MONITORING PORT



- NOTES:**
- A. Material: H.R. Carbon Steel.
 - B. Design Pressure: Atmospheric.
 - C. Design Temperature: Ambient.
 - D. Built & labeled per U.L. spec. #142.
 - E. Exterior: One coat gray primer. See sales order for top coat.
 - F. All fittings to be protected for shipment.
 - G. Customer to verify nozzle sizes, locations and quantities.

APPROVAL FOR CONSTRUCTION SCHEDULE A - MASTER TERMS & CONDITION OF SALE*		SALES ORDER:-		WEIGHT (LBS): 775	
<input type="checkbox"/> APPROVED AS DRAWN.				All units inches unless stated otherwise	
<input type="checkbox"/> APPROVED WITH NOTED CHANGES. CONSTRUCTION WILL BE SCHEDULED WHEN SIGNED DRAWING AND CONFIRMED ORDER ARE RECEIVED.		Phone: 870-735-4473			
SIGNATURE: _____		DESCRIPTION: 300 Gallon 38" I.D. x 5'-0" Shell Height Double Wall Vertical Tank			
DATE: _____		CUSTOMER: _____		P.O.# _____	
*All pages of this Schedule A are incorporated by reference and are a part of the additional terms of the Master Terms & Conditions of Sale. www.newberrytanks.com/masterterms.pdf		DATE: 4/6/2023		SCALE: _____	
		DWG.# NB00300DWV03812G		DRAWN BY: AJC	
				SHEET 1 OF 1	