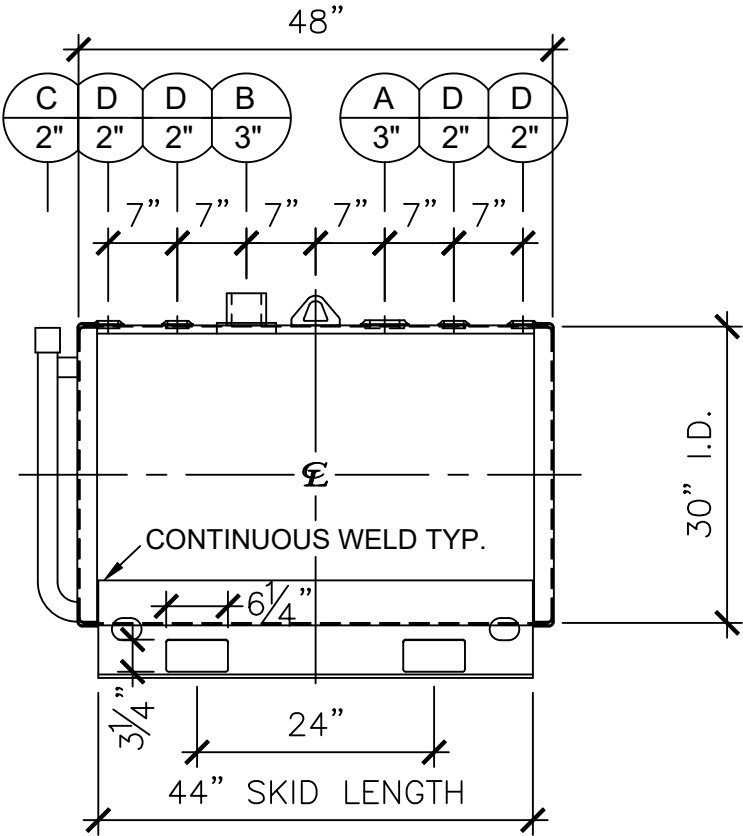



LEFT SIDE



FRONT VIEW

NOZZLE SCHEDULE						
ITEM	SIZE	RATING	TYPE	MATL	REMARKS	NOTES
A	3"	N.P.T.	W.F.	C.S.	PRIMARY	EMERGENCY VENT OPENING
B	3"	N.P.T.	H.CPL.	C.S.	SECONDARY	EMERGENCY VENT OPENING
C	2"	N.P.T.	CPL.	C.S.		INTERSTICE MONITORING PORT
D	2"	N.P.T.	W.F.	C.S.		

- NOTES:
- A. Material: H.R. Carbon Steel.
 - B. Design Pressure: Atmospheric.
 - C. Design Temperature: Ambient.
 - D. Built & Labeled per U.L. Spec. #142.
 - E. Air Test with Water & Soap Suds Solution.
 - F. Interior: Remove Weld Slag (Ship Clean & Dry).
 - G. Exterior: Gray primer included; see Sales Order for top coat.
 - H. All Fittings to be Protected for Shipment.
 - I. Customer to verify nozzle locations, sizes, and quantities.
 - J. Saddles/skids may require shimming or grouting during installation.

APPROVAL FOR CONSTRUCTION SCHEDULE A - MASTER TERMS & CONDITION OF SALE*			SALES ORDER:		WEIGHT (LBS): 600	
<input type="checkbox"/> APPROVED AS DRAWN.			<div>Newberry Tanks New Thinking</div> <div>Phone: 870-735-4473</div>			
<input type="checkbox"/> APPROVED WITH NOTED CHANGES. CONSTRUCTION WILL BE SCHEDULED WHEN SIGNED DRAWING AND CONFIRMED ORDER ARE RECEIVED.						
SIGNATURE: _____			DESCRIPTION: 150 GALLON 30" I.D. x 4'-0" O.A.L. DOUBLE WALL SKID TANK			
DATE: _____			CUSTOMER: _____		P.O.# _____	
*All pages of this Schedule A are incorporated by reference and are a part of the additional terms of the Master Terms & Conditions of Sale. www.newberrytanks.com/masterterms.pdf			DATE: 06/07/23	SCALE:	DWG.# NB00150DWS03012G	DRAWN BY: WR SHEET 1 OF 1