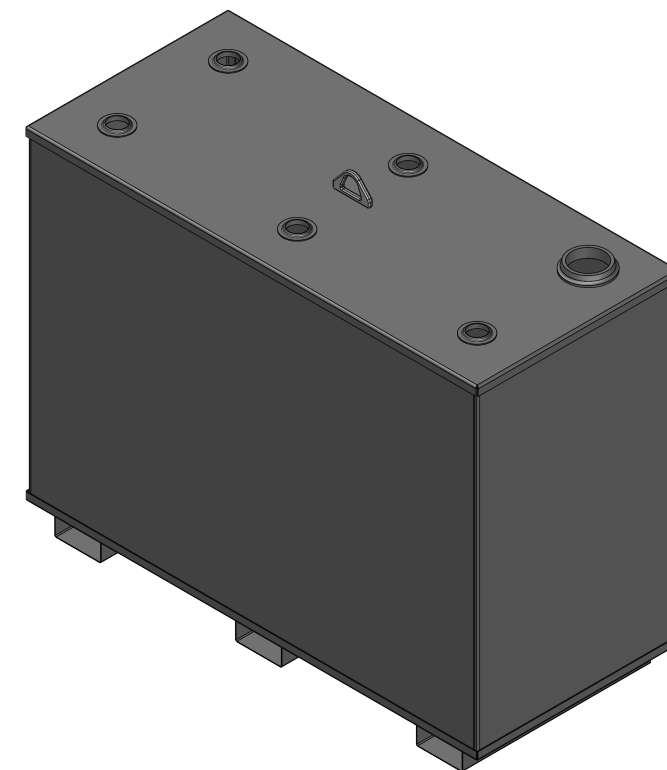
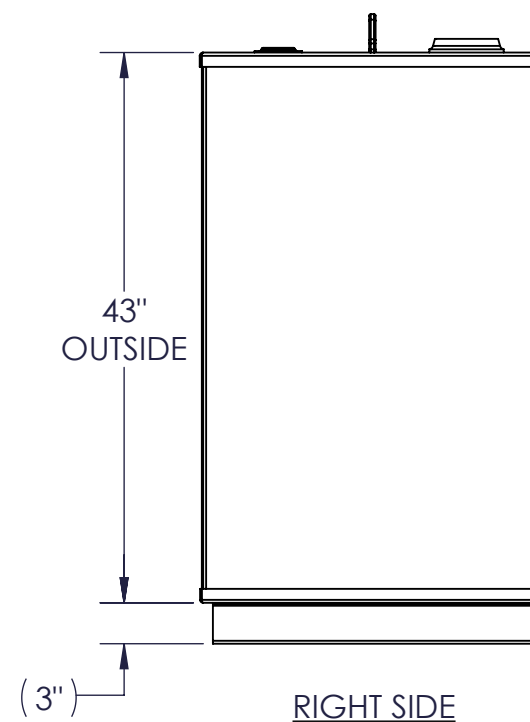
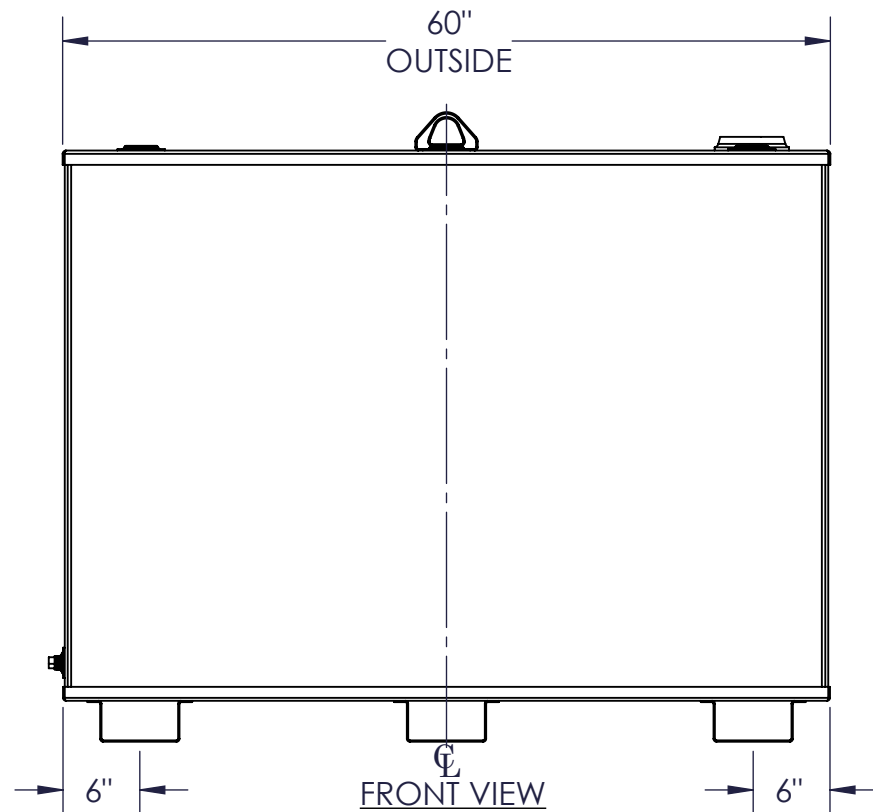
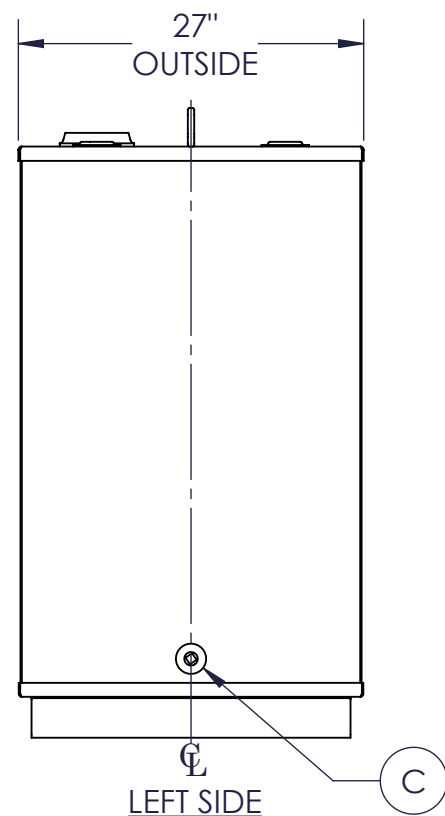


NOZZLE SCHEDULE							
ITEM	SIZE	RATING	TYPE	MATL	PROJ IN	PROJ OUT	REMARKS
A	4"	N.P.T.	W.F.	C.S.	STD.	STD.	EMERGENCY VENT OPENING
B	2"	N.P.T.	W.F.	C.S.	STD.	STD.	
C	3/4"	N.P.T.	W.F.	C.S.	STD.	STD.	DRAIN



#### NOTES:

- MATERIAL: H.R. CARBON STEEL
- DESIGN & OPERATING PRESSURE: ATMOSPHERIC.
- DESIGN & OPERATING TEMPERATURE: AMBIENT.
- TANK TO BE BUILT & LABELED PER U.L. SPEC. #142.
- TANK TO BEAR MANUFACTURERS & U.L. LABELS ONLY.
- TANK TO BE AIR TESTED WITH WATER & SOAP SUDS SOLUTION.
- INTERIOR: REMOVE WELD SLAG (SHIP CLEAN & DRY).
- EXTERIOR: GRAY PRIMER INCLUDED; SEE SALES ORDER FOR TOP COAT.
- ALL FITTINGS TO BE PROTECTED FOR SHIPMENT.
- CUSTOMER HAS THE RESPONSIBILITY TO VERIFY ALL DIMENSIONS.

APPROVAL FOR CONSTRUCTION  
SCHEDULE A - MASTER TERMS &  
CONDITION OF SALE\*

☐ APPROVED AS DRAWN.

☐ APPROVED WITH NOTED CHANGES,  
CONSTRUCTION WILL BE SCHEDULED  
WHEN SIGNED DRAWING AND  
CONFIRMED ORDER ARE RECEIVED.

SIGNATURE: \_\_\_\_\_

DATE: \_\_\_\_\_

\*All pages of this Schedule A are incorporated by  
reference and are a part of the additional terms of  
the Master Terms & Conditions of Sale.  
www.newberrytanks.com/masterterms.pdf

SALES ORDER: -			WEIGHT (LBS): 393	
			All units inches unless stated otherwise	
Phone: 870-735-4473				
DESCRIPTION: 280 GALLON RECTANGULAR UL 142 SINGLE WALL TANK				
CUSTOMER:			P.O.#	
DATE: 2/7/2023	SCALE:	DWG.# FTSBS-0280	DRAWN BY: AJC	
			CHKD BY: -	