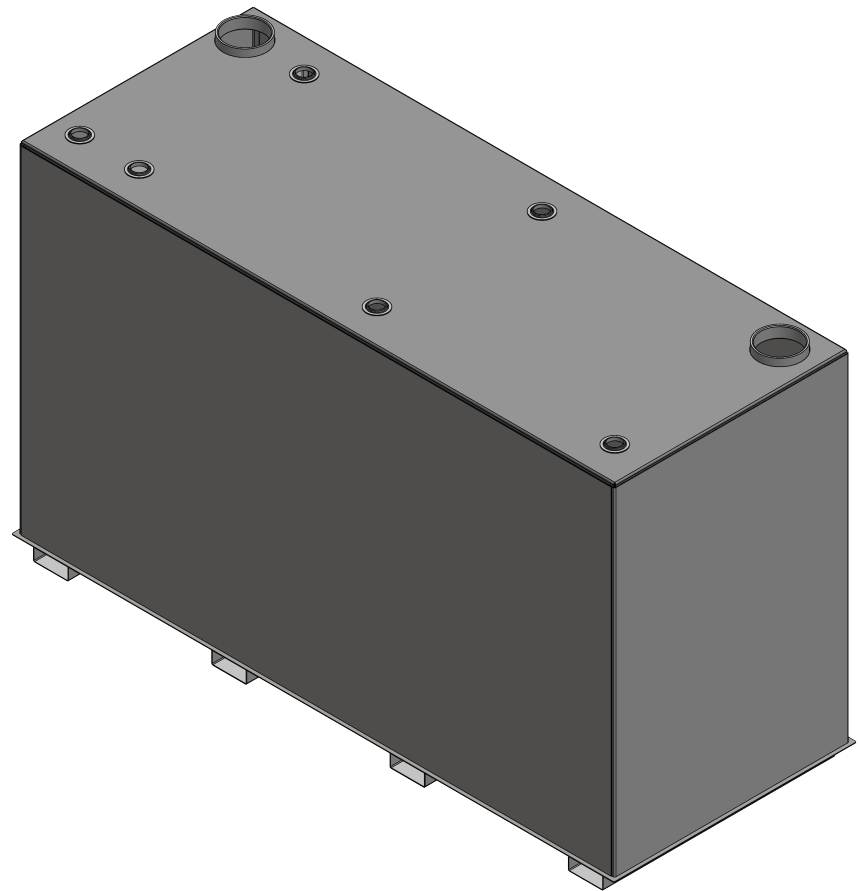
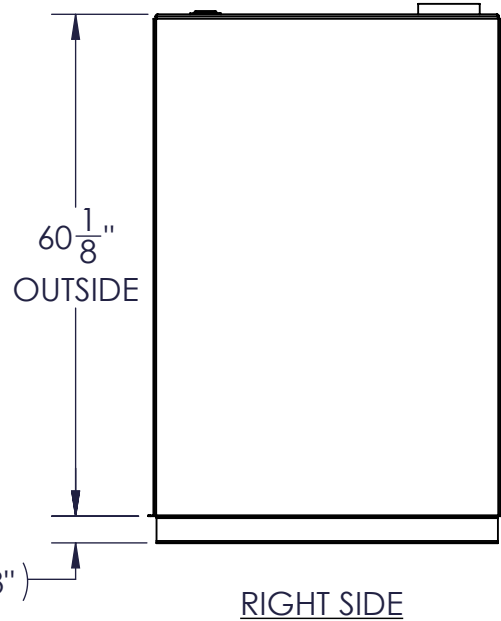
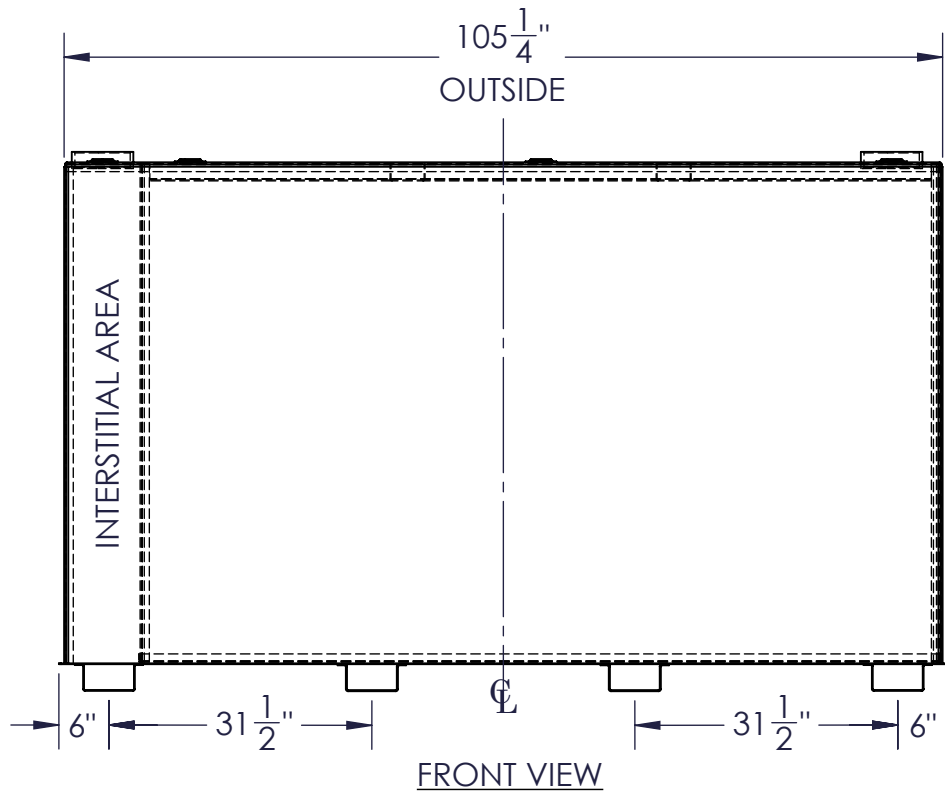
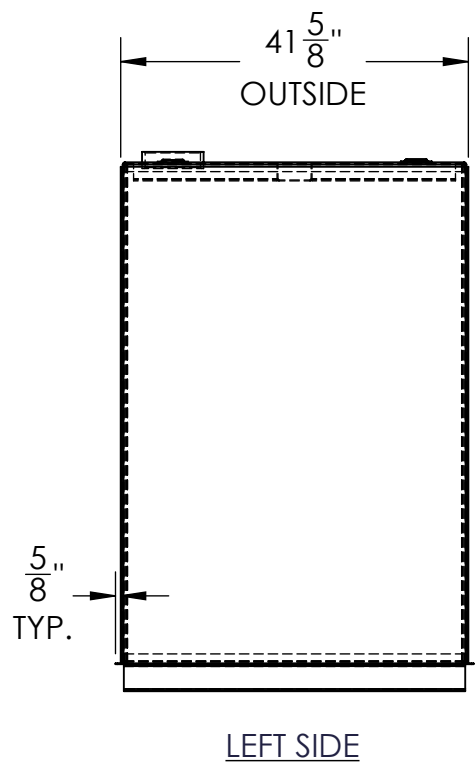


| NOZZLE SCHEDULE | | | | | | | |
|-----------------|------|--------|--------|-------|----------|-----------|----------------------------------|
| ITEM | SIZE | RATING | TYPE | MATL. | PROJ. IN | PROJ. OUT | REMARKS |
| A | 6" | N.P.T. | H.CPL. | C.S. | STD. | STD. | PRIMARY EMERGENCY VENT OPENING |
| B | 6" | N.P.T. | H.CPL. | C.S. | STD. | STD. | SECONDARY EMERGENCY VENT OPENING |
| C | 2" | N.P.T. | W.F. | C.S. | STD. | STD. | |



- NOTES:
- A. MATERIAL: H.R. CARBON STEEL
 - B. DESIGN & OPERATING PRESSURE: ATMOSPHERIC.
 - C. DESIGN & OPERATING TEMPERATURE: AMBIENT.
 - D. TANK TO BE BUILT & LABELED PER U.L. SPEC. #142.
 - E. TANK TO BEAR MANUFACTURERS & U.L. LABELS ONLY.
 - F. TANK TO BE AIR TESTED WITH WATER & SOAP SUDS SOLUTION.
 - G. INTERIOR: REMOVE WELD SLAG (SHIP CLEAN & DRY).
 - H. EXTERIOR: GRAY PRIMER INCLUDED; SEE SALES ORDER FOR TOP COAT.
 - I. ALL FITTINGS TO BE PROTECTED FOR SHIPMENT.
 - J. CUSTOMER HAS THE RESPONSIBILITY TO VERIFY ALL DIMENSIONS.

APPROVAL FOR CONSTRUCTION
SCHEDULE A - MASTER TERMS &
CONDITION OF SALE*

☐ APPROVED AS DRAWN.

☐ APPROVED WITH NOTED CHANGES,
CONSTRUCTION WILL BE SCHEDULED
WHEN SIGNED DRAWING AND
CONFIRMED ORDER ARE RECEIVED.

SIGNATURE: _____

DATE: _____

*All pages of this Schedule A are incorporated by
reference and are a part of the additional terms of
the Master Terms & Conditions of Sale.
www.newberrytanks.com/masterterms.pdf

| | | | | |
|---|--------|---------------------|--|--|
| SALES ORDER: - | | | WEIGHT (LBS): 1732 | |
|  | | | All units inches unless stated otherwise | |
| Phone: 870-735-4473 | | | | |
| DESCRIPTION: 1000 GALLON RECTANGULAR UL 142 DOUBLE WALL TANK | | | | |
| CUSTOMER: | | | P.O.# | |
| DATE: 3/7/2023 | SCALE: | DWG.# FTDBS-1000 | DRAWN BY: AJC CHKD BY: - | |