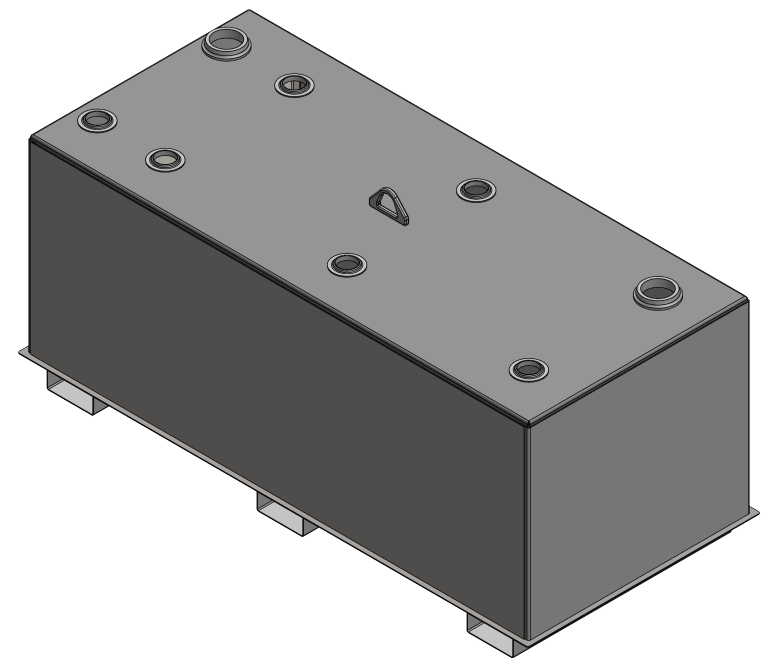
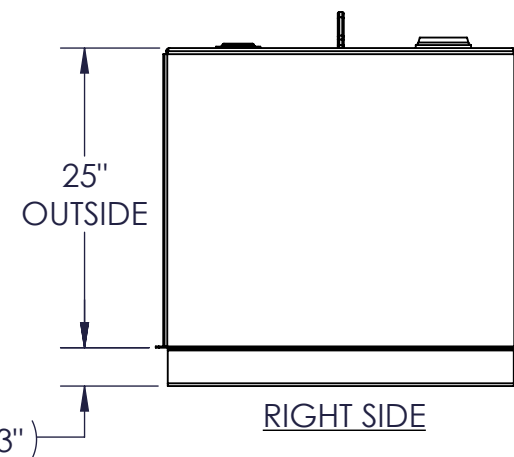
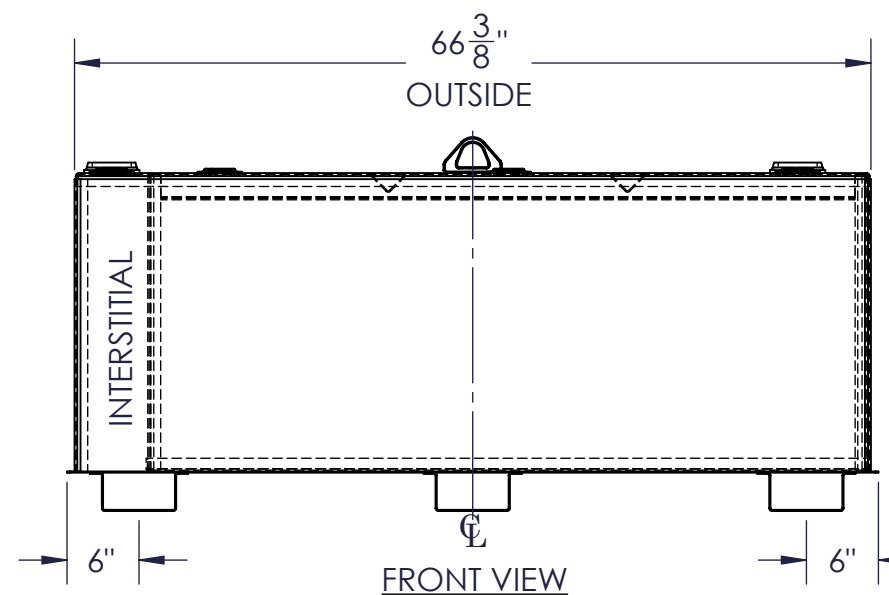
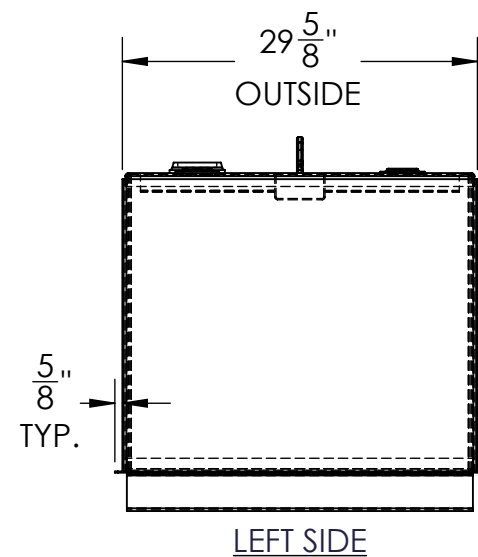


NOZZLE SCHEDULE							
ITEM	SIZE	RATING	TYPE	MATL.	PROJ. IN	PROJ. OUT	REMARKS
A	3"	N.P.T.	W.F.	C.S.	STD.	STD.	PRIMARY EMERGENCY VENT OPENING
B	3"	N.P.T.	W.F.	C.S.	STD.	STD.	SECONDARY EMERGENCY VENT OPENING
C	2"	N.P.T.	W.F.	C.S.	STD.	STD.	



NOTES:

- MATERIAL: H.R. CARBON STEEL
- DESIGN & OPERATING PRESSURE: ATMOSPHERIC.
- DESIGN & OPERATING TEMPERATURE: AMBIENT.
- TANK TO BE BUILT & LABELED PER U.L. SPEC. #142.
- TANK TO BEAR MANUFACTURERS & U.L. LABELS ONLY.
- TANK TO BE AIR TESTED WITH WATER & SOAP SUDS SOLUTION.
- INTERIOR: REMOVE WELD SLAG (SHIP CLEAN & DRY).
- EXTERIOR: GRAY PRIMER INCLUDED; SEE SALES ORDER FOR TOP COAT.
- ALL FITTINGS TO BE PROTECTED FOR SHIPMENT.
- CUSTOMER HAS THE RESPONSIBILITY TO VERIFY ALL DIMENSIONS.

APPROVAL FOR CONSTRUCTION SCHEDULE A - MASTER TERMS & CONDITION OF SALE*		SALES ORDER: -		WEIGHT (LBS): 527	
<input type="checkbox"/> APPROVED AS DRAWN.		 Newberry Tanks New Thinking Phone: 870-735-4473		All units inches unless stated otherwise	
<input type="checkbox"/> APPROVED WITH NOTED CHANGES, CONSTRUCTION WILL BE SCHEDULED WHEN SIGNED DRAWING AND CONFIRMED ORDER ARE RECEIVED.					
SIGNATURE: _____		DESCRIPTION: 180 GALLON RECTANGULAR UL 142 DOUBLE WALL TANK			
DATE: _____		CUSTOMER: _____		P.O.# _____	
*All pages of this Schedule A are incorporated by reference and are a part of the additional terms of the Master Terms & Conditions of Sale. www.newberrytanks.com/masterterms.pdf		DATE: 3/7/2023	SCALE:	DWG.# FTDBS-0180	DRAWN BY: AJC CHKD BY: _____