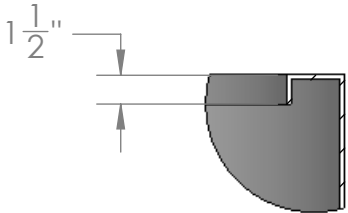


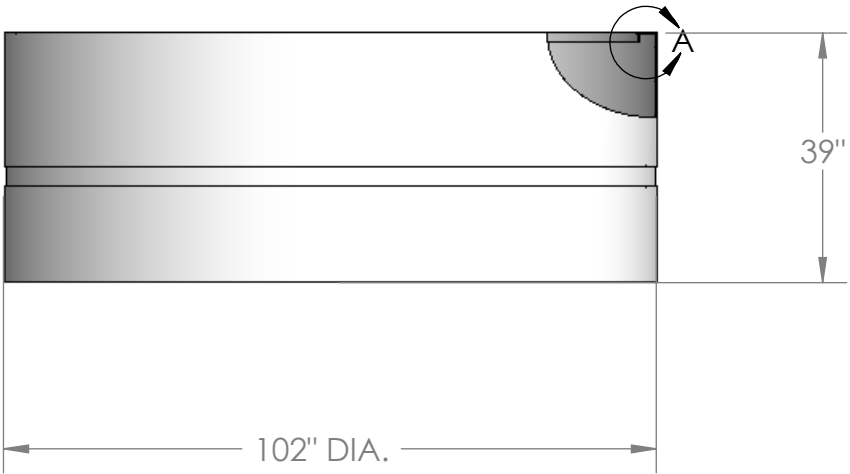
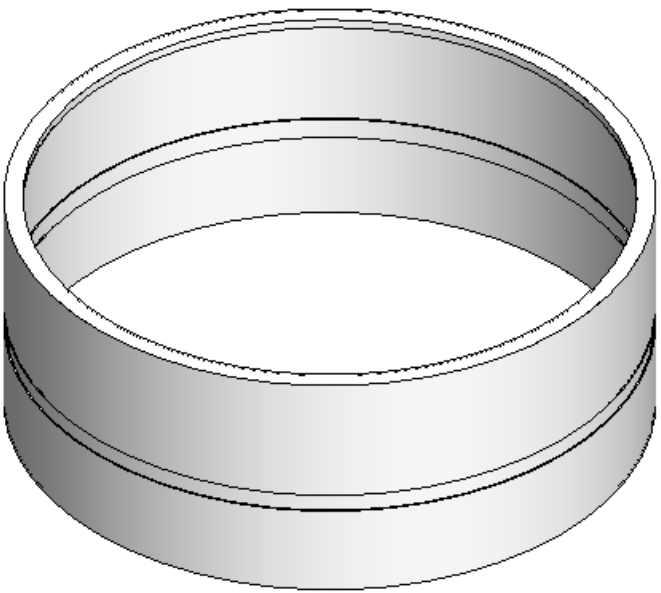
96" DIA.

3" MOLDED RIB.



1 1/2"

DETAIL A
SCALE 1 : 10



39"

102" DIA.

- NOTES:
- 1. MATERIAL: HDPE
 - 2. MOLDED WEIGHT: 200 LBS.

PROPRIETARY AND CONFIDENTIAL
THE INFORMATION CONTAINED IN THIS DRAWING IS THE SOLE PROPERTY OF <INSERT COMPANY NAME HERE>. ANY REPRODUCTION IN PART OR AS A WHOLE WITHOUT THE WRITTEN PERMISSION OF <INSERT COMPANY NAME HERE> IS PROHIBITED.

		UNLESS OTHERWISE SPECIFIED:		NAME	DATE	CUSTOM ROTO-MOLDING, INC.		
		DIMENSIONS ARE IN INCHES	DRAWN	EBW	6/4/09			
		TOLERANCES:	CHECKED			TITLE: <div>1250 GALLON OPEN TOP TANK</div>		
		FRACTIONAL ±	ENG APPR.					
		ANGULAR: MACH ± BEND ±	MFG APPR.					
		TWO PLACE DECIMAL ±	Q.A.					
		THREE PLACE DECIMAL ±	COMMENTS:					
		INTERPRET GEOMETRIC TOLERANCING PER:				SIZE	DWG. NO.	REV
		MATERIAL				B	1250 OTT	
NEXT ASSY	USED ON	FINISH				SCALE: 1:50		
APPLICATION		DO NOT SCALE DRAWING				WEIGHT:		SHEET 1 OF 1