

10011WH

ECN #	REV	DESCRIPTION	DATE
	00	RELEASE	27-JUL-2004
OE-001	A1	CLERICAL ERROR	07-APR-2010
10-007	A2	BOLT WAS 4in LONG	29-NOV-2010
10-008	A2	GASKET WAS GS1101	29-NOV-2010
OE-001	A3	CLERICAL ERROR	10-APR-2013
OE-001	A4	ADDED SEAM PROFILE	24-APR-2013

SECTION A-A

NOTES:

1. THESE DIMENSIONS REPRESENT DRUM AFTER BEING PROPERLY ASSEMBLED AND CLOSED PER SKOLNIK CLOSING INSTRUCTIONS
2. TO DETERMINE GREATER ACCURACY OF ANY DIAMETRIC DIMENSION, MEASURING OF CIRCUMFERENCE IS REQUIRED
3. CONSTRUCTION per 49 CFR §178.504 (b)

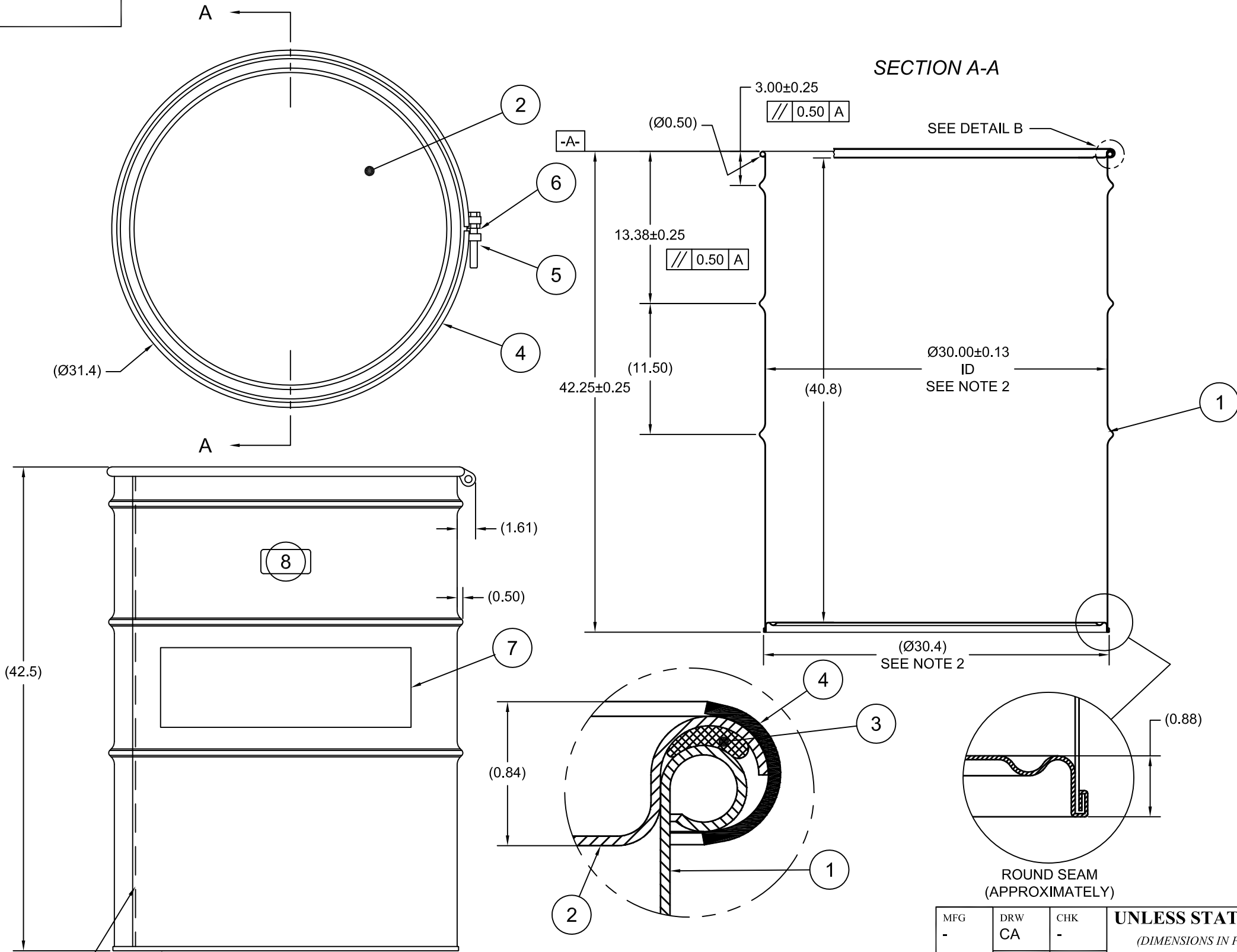
MATERIAL:

1. DRUM BODY AND COVER CRCQ CARBON STEEL PER ASTM A1008 AND ASTM A568 OR EQUIVALENT
2. MATERIAL THICKNESS 1.5mm (0.0543 - 0.0590;16 GAUGE)
3. GASKET MAT'L PER ASTM D1056

FINISH:

1. DRUM BODY EXTERIOR PAINTED YELLOW (LQ10024)  
COVER EXTERIOR PAINTED RED (LQ10017).

ITEM	P/N	DESCRIPTION	QTY
8		UN DURABLE LABEL	1
7	LS0500	SALVAGE DRUM LABEL, 5 LANGUAGE	1
6	NT5800	NUT 5/8-11UNC	1
5	BT5845	BOLT 5/8-11UNC X 4 1/2in LONG	1
4	RB1112	BOLT RING, 12 GA, POWDER COATED	1
3	GE1101	GASKET, Ø1/2 EPDM SPONGE	1
2	P3015	COVER, Ø30", 1.5 CRCQ	1
1		DRUM BODY AND BOTTOM	1



OVERLAP WELD

UN NUMBER EMBOSSED ON BOTTOM OF DRUM  
 ½" CHARACTERS READING:  
 UN/1A2/Y409/S/YR  
 1.5 \*  
 (YR = YEAR OF MANUFACTURE)

TARE WEIGHT:  
100 lbs

THE USE OF INFORMATION CONTAINED HEREIN IS RESTRICTED FOR THE BENEFIT OF SKOLNIK INDUSTRIES ONLY. UNAUTHORIZED USE OR DISCLOSURE, COPYING OR OTHERWISE REPRODUCING (IN ANY MANNER) ANY PORTION OF THIS DRAWING WITHOUT PRIOR WRITTEN PERMISSION OF AN AUTHORIZED OFFICIAL OF SKOLNIK INDUSTRIES IS STRICTLY PROHIBITED.

MFG	DRW	CHK
-	CA	-
-	SLS	QA
-	APR	-
FILE CREATED IN	3 <sup>RD</sup>	
AutoCAD 2002	UNLESS STATED OTHERWISE (DIMENSIONS IN PARENTHESIS ARE FOR REFERENCE ONLY!!!) ALL DIMENSIONS ARE IN INCHES DO NOT SCALE DRAWING TOLERANCES: FRACTIONS ±1/4 X° ± 3° X.X ± 0.2 X.XX ± 0.10 X.XXX ± 0.030	

**SKOLNIK INDUSTRIES, INC.**  
 4900 SOUTH KILBOURN AVENUE, CHICAGO, IL 60632

DESCRIPTION  
 110 GALLON OPEN HEAD DRUM  
 1.5 - 1.5 - 1.5 CRCQ STEEL  
 1A2/Y409/S

REL. DATE	PART NUM. / FILENAME	REV
22-MAY-2007	HM11001	A4